

Wire and Cable for Vital Communication Applications

Specialty Premise Data Communications • Railway and Transit • Low-Smoke, Zero-Halogen Designs
Industrial Ethernet • Multi-Pair Telephone • Sound and Security/Fire Alarm

Introduction

Comtran Cable LLC, located in Attleboro, MA, is a leading manufacturer of high-performance data communications, premise telephone, low-voltage and specialty wire and cable. We offer a diverse product selection supporting various market segments such as:

- Specialty Data Communications
- VITALink® Cables
- Multi-Pair Unshielded and Shielded Telephone
- Low-Smoke, Zero-Halogen Designs
- Braided Constructions
- Railway Station and Transit Applications
- Sound and Security
- Low-Voltage and Fire Alarm Cables

These products are sold through authorized distributors throughout North America. Since its inception in 1985, Comtran Cable has gained a solid reputation for being a customer-oriented and reliable business partner supplying quality products shipped from stock. Our highly regarded customer service team is considered by many of our distributors to be the most responsive, knowledgeable and trustworthy in our industry. At Comtran, keeping The Customer #1 is not a tagline but a daily commitment that is taken very seriously throughout our organization. Our goal is to deliver the ultimate value to our distributors and their customers.

In 2001, Comtran became a member company of The Marmon Group, based in Chicago, IL, an international association of more than 130 business units that operate independently within diverse business sectors. Within Marmon's Engineered Wire and Cable Division reside other well-known cable manufacturers such as RSCC, Cable USA, Aetna, RSCC A&D and Harbour Industries. Harvesting all of the synergies between the various companies allows Comtran to be a specialty cable manufacturer to many high-tech industries.

In March 2008, Berkshire Hathaway Inc. acquired majority interest in The Marmon Group. Berkshire Hathaway and its subsidiaries engage in a number of diverse business activities including property and casualty insurance, utility and energy, finance, manufacturing, retailing and services.

Marmon Wire & Cable LLC includes more than 12 member companies that manufacture and market electrical and electronic wire and cable. Together, these companies employ about 2,300 people in North America and in Europe. As a member company, Comtran Cable has the management and financial strength needed to sustain its growth and leadership position in the marketplace.

Facilities

In June 2010, Comtran relocated to a modern 185,000-square-foot manufacturing facility in Attleboro, Massachusetts.

Comtran Cable has diverse manufacturing capabilities that are ever changing and expanding due to the dynamic markets that we serve. In addition to manufacturing, this location serves as headquarters, including finance and administration, sales/marketing, engineering and research and development. Products are maintained in our 40,000-square-foot warehouse and distribution center. Our unwavering commitment to maintain such a vast array of product in stock that can typically be shipped in less than 24 hours is a key element in our steady growth over the past 25+ years. Short lead-times and a strong commitment to on-time delivery has always been our priority.

Quality Commitment

Comtran Cable's reputation for quality is supported by a comprehensive Quality Management System and ISO 9001:2008 Registration.

Table of Contents

PREMISE DATA

COM-Link Category 6e UTP Cable	2
COM-Link Category 6 UTP Cables	3
COM-Link Category 6 Shielded Cables	4
COM-Link Category 6 Outside Plant Cables	5
COM-Link Category 6 and Category 5e Patch Cables	6
COM-Link Category 5e Powersum Cables	7
COM-Link Category 5e UTP Cables	8
COM-Link Category 5e Shielded Cables	9
COM-Link Category 5e Outside Plant Cables	10
COM-Link Category 6 and Category 5e Bundled Cables	11
Datacom Warranty and Connectivity Partnerships	12

SPECIALTY DATA

LSZH Category 6 and 5e Telecommunication Cables	13
Indoor/Outdoor Category 6 and 5e Telecommunication Cables.....	14
Hub-LINK, LSZH Telecommunication and Data/Transmission Cables	15
X-Link Industrial Ethernet Cables.....	16
Industrial Continuously Welded/Corrugated Datacom and Telecommunications Cables	17

COMMUNICATIONS

Plenum Category 3 Communications Cables	18
Plenum Communication Cables.....	18
Plenum Shielded Communication Cables.....	18
Riser Category 3 Communication Cables	19
Shielded Riser Communication Cables.....	19

FIRE ALARM / SOUND AND SECURITY

Plenum Fire Alarm Cables	20
Shielded Plenum Fire Alarm Cables	21
Riser Fire Alarm Cables	22
Riser Mid-Cap Fire Alarm Cables.....	22
Shielded Riser Fire Alarm Cables.....	23
VITALink® Unshielded Cables.....	24
VITA Link® Shielded Cables.....	25
Plenum Sound and Security Cables.....	26
Shielded Plenum Sound and Security Cables	27
Riser Sound and Security Cables	28
Shielded Riser Sound and Security Cables	29
Plenum/Riser 4 Element Composite Sound and Security Cables	30
Individually Shielded Plenum Sound and Security Cables.....	31
Overall Shielded and Individually Shielded Multipair Cables	31

SPECIALTY ELECTRONIC

Overall Shielded and Individually Shielded Multipair/Multiconductor Cables.	32
Shielded/Unshielded AWM Electronic Cables	32
Shielded Specialty AWM Electronic Cables.....	33
Riser Sound and Security Bag Wire	34
Power and Category 5e Data	35

GENERAL INFORMATION

Color Code Charts	36 & 37
Catalog Part Number Index.....	38 & 39
NEC Substitutional Chart	40

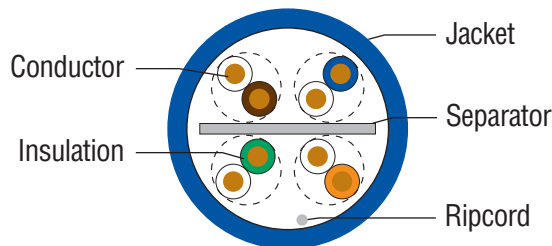
Comtran Cable LLC had made every effort to ensure the technical accuracy of the data and information contained in this catalog at the time of publishing.

Technical data, specifications, industry applications, drawing, weights, dimensions, packaging and part numbers detailed within are subject to change without notice due to product enhancements.

Comtran Cable LLC is not responsible for any typographical errors or inaccuracies that may occur. For the most current information, please contact Comtran Cable LLC at 508-399-7004.

COM-Link Category 6e UTP Premise Data Cables

RISER: UL TYPE CMR
PLENUM: UL TYPE CMP
300 VOLT



Construction

- Conductor: 23 AWG Solid Bare Copper
- Tape Separator
- Color Code Per TIA-568-C.2

Insulation

- Plenum: Fluoropolymer
- Riser: Polyolefin

Jacket

- Plenum: Flame-Retardant PVC
- Riser: Low-Smoke, Flame-Retardant PVC

Applications

- Gigabit Ethernet (1000Base-T)
- Multimedia and ISDN
- High-Speed Voice/Data Applications
- 1.2 Gbps Ethernet
- Broadband Video
- Desktop Publishing

Compliances

- ETL Verified ANSI/TIA-568-C.2
- UL Listed Type CMR
- UL Listed Type CMP
- ICEA S-102-700
- NEC Article 800
- California State Fire Marshal
- RoHS Compliant

Electrical Characteristics

DC Resistance (max.): 9.38

DC Resistance Unbalance (max.)

Individual Pair %: 5.0

Nominal Velocity of Propagation

% Speed of Light: Plenum: 70 Riser: 68

Characteristic Impedance (Ohms): 100 +/- 15

Propagation Delay Skew (max.) (ns/100m): 45

Part Numbers				Available Put-Ups		
Jacket Color		Riser	Plenum	1,000' Box	1,000' Reel	Bulk Reels
BLUE		35196	34972	X	X	X
WHITE		35195	34971	X	X	X
GRAY		35197	34973	X	X	X
GREEN		35199	34975	X	X	X
YELLOW		35198	34974	X	X	X

Physical Data	Riser	Plenum
Nominal Cable Diameter (inches)	.215	.205
Nominal Cable Weight (lbs./1,000 ft.)	24.0	25.0
Temperature Rating (Celsius)		
Installation:	0 to +60	0 to +60
Operation:	-20 to +75	-20 to +75
Pulling Force (max. lbs.)	32	32

Transmission Throughput

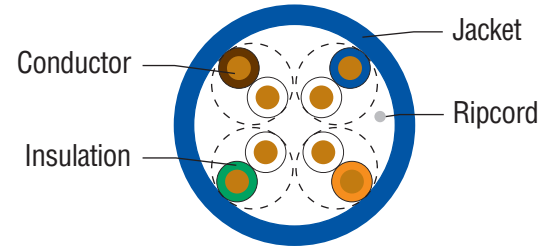
	Char. Impedance	Return Loss	Insertion Loss	NEXT	PSNEXT	ACRF	PSACRF
Freq.	(Ohms)	(dB)	(dB/100m)	(dB/100m)	(dB/100m)	(dB/100m)	(dB/100m)
(MHz)	(+/-15)	(Min.)	(Max.)	(Min.)	(Min.)	(Min.)	(Min.)
1	100	20	2	74.3	72.3	67.8	64.8
4	100	23	3.8	65.3	63.3	55.7	52.7
8	100	24.5	5.3	60.8	58.8	49.7	46.7
10	100	25	6	59.3	57.3	47.8	44.8
16	100	25	7.6	56.3	54.3	43.7	40.7
20	100	25	8.5	54.8	52.8	41.7	38.7
25	100	24.3	9.5	53.3	51.3	39.8	36.8
31.25	100	23.6	10.7	51.9	49.9	37.9	34.9
62.5	100	21.5	15.4	47.4	45.4	31.8	28.8
100	100	20.1	19.8	44.3	42.3	27.8	24.8
125	100	19.4	22.4	42.9	40.9	25.8	22.8
155	100	18.8	25.2	41.4	39.4	23.9	20.9
175	100	18.4	26.9	40.7	38.7	22.9	19.9
200	100	18	29	39.8	37.8	21.7	18.7
250	100	17.3	32.8	38.3	36.3	19.8	16.8
300	100	16.8	36.4	41.1	39.1	24.3	21.3
350	100	16.3	39.8	40.1	38.1	22.9	19.9
400	100	15.9	43	39.3	37.3	21.8	18.8
450	100	15.5	46	38.5	36.5	20.7	17.7
500	100	15.2	48.9	37.8	35.8	19.8	16.8
550	100	14.9	51.8	37.2	35.2	19	16



RoHS Compliant

RISER: UL TYPE CMR
PLENUM: UL TYPE CMP
 300 VOLT

COM-Link Category 6 UTP Premise Data Cables



Construction

- Conductor: 23 AWG Solid Bare Copper
- Color Code Per TIA-568-C.2

Insulation

- Plenum: Fluoropolymer
- Riser: Polyolefin

Jacket

- Plenum: Flame-Retardant PVC
- Riser: Low-Smoke, Flame-Retardant PVC

Applications

- Gigabit Ethernet (1000Base-T)
- Multimedia and ISDN
- High-Speed Voice/Data Applications
- 1.2 Gbps Ethernet
- Broadband Video
- Desktop Publishing

Compliances

- ETL Verified ANSI/TIA-568-C.2
- UL Listed Type CMR
- UL Listed Type CMP
- ICEA S-102-700
- NEC Article 800
- California State Fire Marshal
- RoHS Compliant

Part Numbers			Available Put-Ups		
Jacket Color	Riser	Plenum	1,000' Box	1,000' Reel	Bulk Reels
BLUE	38677	38600	X	X	X
WHITE	38678	38601	X	X	X
GRAY	35882	34932	X	X	X
GREEN	35897	34277	X	X	X
YELLOW	35184	34481	X	X	X

Physical Data	Riser	Plenum
Nominal Cable Diameter (inches)	.200	.190
Nominal Cable Weight (lbs./1,000 ft.)	25.0	23.0
Temperature Rating (Celsius)		
Installation:	0 to +60	0 to +60
Operation:	-20 to +75	-20 to +75
Pulling Force (max. lbs.)	32	32

Transmission Throughput

	Char. Impedance	Return Loss	Insertion Loss	NEXT	PSNEXT	ACRF	PSACRF
Freq.	(Ohms)	(dB)	(dB/100m)	(dB/100m)	(dB/100m)	(dB/100m)	(dB/100m)
(MHz)	(+/-15)	(Min.)	(Max.)	(Min.)	(Min.)	(Min.)	(Min.)
1	100	20	2	74.3	72.3	67.8	64.8
4	100	23	3.8	65.3	63.3	55.7	52.7
8	100	24.5	5.3	60.8	58.8	49.7	46.7
10	100	25	6	59.3	57.3	47.8	44.8
16	100	25	7.6	56.3	54.3	43.7	40.7
20	100	25	8.5	54.8	52.8	41.7	38.7
25	100	24.3	9.5	53.3	51.3	39.8	36.8
31.25	100	23.6	10.7	51.9	49.9	37.9	34.9
62.5	100	21.5	15.4	47.4	45.4	31.8	28.8
100	100	20.1	19.8	44.3	42.3	27.8	24.8
125	100	19.4	22.4	42.9	40.9	25.8	22.8
155.52	100	18.8	25.2	41.4	39.4	23.9	20.9
175	100	18.4	26.9	40.7	38.7	22.9	19.9
200	100	18	29	39.8	37.8	21.7	18.7
250	100	17.3	32.8	38.3	36.3	19.8	16.8

Electrical Characteristics

DC Resistance (max.): 9.38
 DC Resistance Unbalance (max.) Individual Pair %: 5.0

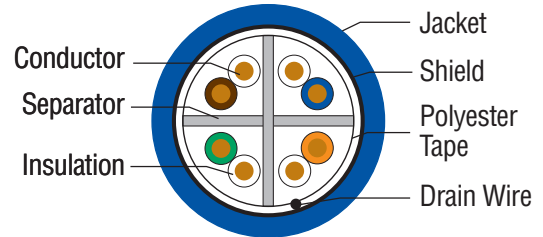
Nominal Velocity of Propagation
 % Speed of Light:
 Plenum: 70 Riser: 68

Characteristic Impedance (Ohms): 100 +/- 15
 Propagation Delay Skew (max.) (ns/100m): 45



COM-Link Category 6 Shielded Premise Data Cables

RISER: UL TYPE CMR
PLENUM: UL TYPE CMP
300 VOLT



Construction

- Conductor: 23 AWG Solid Bare Copper
- Cross Web Separator
- Color Code Per TIA-568-C.2
- Polyester Core Wrap
- 24 AWG Tinned Copper Drain Wire
- Aluminum/Polyester (aluminum side in)

Insulation

- Plenum: Fluoropolymer
- Riser: Polyolefin

Jacket

- Plenum: Flame-Retardant PVC
- Riser: Low-Smoke, Flame-Retardant PVC

Applications

- Gigabit Ethernet (1000Base-T)
- Multimedia and ISDN
- High-Speed Voice/Data Applications
- 1.2 Gbps Ethernet
- Broadband Video
- Desktop Publishing

Compliances

- ETL Verified ANSI/TIA-568-C.2
- UL Listed Type CMR
- UL Listed Type CMP
- ICEA S-102-700
- NEC Article 800
- California State Fire Marshal
- RoHS Compliant

Feature

- Shield reduces electromagnetic interference (EMI) for superior performance

Part Numbers				Available Put-Ups		
Jacket Color	Riser	Plenum	1,000' Box	1,000' Reel	Bulk Reels	
BLUE	35930	35941		X	X	
WHITE	35946	35940		X	X	
GRAY	35931	35942		X	X	
GREEN	35928	35939		X	X	

Physical Data	Riser	Plenum
Nominal Cable Diameter (inches)	.280	.265
Nominal Cable Weight (lbs./1,000 ft.)	36.0	35.0
Temperature Rating (Celsius)		
Installation:	0 to +60	0 to +60
Operation:	-20 to +75	-20 to +75
Pulling Force (max. lbs.)	32	32

Transmission Throughput

	Char. Impedance	Return Loss	Insertion Loss	NEXT	PSNEXT	ACRF	PSACRF
Freq.	(Ohms)	(dB)	(dB/100m)	(dB/100m)	(dB/100m)	(dB/100m)	(dB/100m)
(MHz)	(+/-15)	(Min.)	(Max.)	(Min.)	(Min.)	(Min.)	(Min.)
1	100	20	2	74.3	72.3	67.8	64.8
4	100	23	3.8	65.3	63.3	55.7	52.7
8	100	24.5	5.3	60.8	58.8	49.7	46.7
10	100	25	6	59.3	57.3	47.8	44.8
16	100	25	7.6	56.3	54.3	43.7	40.7
20	100	25	8.5	54.8	52.8	41.7	38.7
25	100	24.3	9.5	53.3	51.3	39.8	36.8
31.25	100	23.6	10.7	51.9	49.9	37.9	34.9
62.5	100	21.5	15.4	47.4	45.4	31.8	28.8
100	100	20.1	19.8	44.3	42.3	27.8	24.8
125	100	19.4	22.4	42.9	40.9	25.8	22.8
155	100	18.8	25.2	41.4	39.4	23.9	20.9
175	100	18.4	26.9	40.7	38.7	22.9	19.9
200	100	18	29	39.8	37.8	21.7	18.7
250	100	17.3	32.8	38.3	36.3	19.8	16.8

Electrical Characteristics

DC Resistance (max.): 9.38

DC Resistance Unbalance (max.) Individual Pair %: 5.0

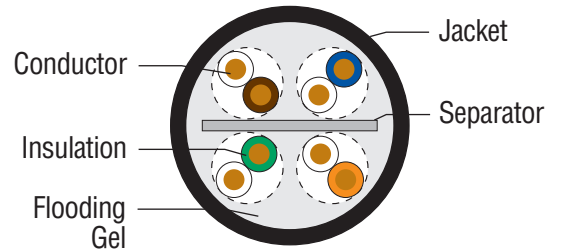
Nominal Velocity of Propagation

% Speed of Light:
Plenum: 70 Riser: 68

Characteristic Impedance (Ohms): 100 +/- 15

Propagation Delay Skew (max.) (ns/100m): 45

COM-Link Category 6 OSP Outside Plant Premise Data Cables



Construction

- Conductor: 23 AWG Solid Bare Copper
- Tape Separator
- Color Code Per TIA-568-C.2

Insulation

- Polyolefin

Jacket

- UV Resistant Polyethylene

Flooding Compound

- Waterproof Gel

Applications

- Gigabit Ethernet (1000Base-T)
- Multimedia and ISDN
- High-Speed Voice/Data Applications
- 1.2 Gbps Ethernet
- Broadband Video
- Desktop Publishing
- Aerial and Duct Installations

Compliances

- ETL Verified ANSI/TIA-568-C.2
- ICEA S-102-700
- RoHS Compliant

Feature

- Protects against harmful environments that can cause electrical failures

Part Numbers	Available Put-Ups			
	Jacket Color	1,000' Box	1,000' Reel	Bulk Reels
35911		X	X	X

Physical Data	
Nominal Cable Diameter (inches)	.240
Nominal Cable Weight (lbs./1,000 ft.)	27
Temperature Rating (Celsius)	
Installation:	-30 to +60
Operation:	-45 to +80
Pulling Force (max. lbs.)	32

Transmission Throughput

	Char. Impedance	Return Loss	Insertion Loss	NEXT	PSNEXT	ACRF	PSACRF
Freq.	(Ohms)	(dB)	(dB/100m)	(dB/100m)	(dB/100m)	(dB/100m)	(dB/100m)
(MHz)	(+/-15)	(Min.)	(Max.)	(Min.)	(Min.)	(Min.)	(Min.)
1	100	20	2	74.3	72.3	67.8	64.8
4	100	23	3.8	65.3	63.3	55.7	52.7
8	100	24.5	5.3	60.8	58.8	49.7	46.7
10	100	25	6	59.3	57.3	47.8	44.8
16	100	25	7.6	56.3	54.3	43.7	40.7
20	100	25	8.5	54.8	52.8	41.7	38.7
25	100	24.3	9.5	53.3	51.3	39.8	36.8
31.25	100	23.6	10.7	51.9	49.9	37.9	34.9
62.5	100	21.5	15.4	47.4	45.4	31.8	28.8
100	100	20.1	19.8	44.3	42.3	27.8	24.8
125	100	19.4	22.4	42.9	40.9	25.8	22.8
155.52	100	18.8	25.2	41.4	39.4	23.9	20.9
175	100	18.4	26.9	40.7	38.7	22.9	19.9
200	100	18	29	39.8	37.8	21.7	18.7
250	100	17.3	32.8	38.3	36.3	19.8	16.8

Electrical Characteristics

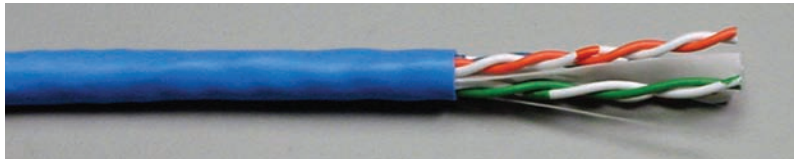
DC Resistance (max.): 9.38
 DC Resistance Unbalance (max.) Individual Pair %: 5.0

Nominal Velocity of Propagation % Speed of Light: 68
 Propagation Delay Skew (max.) (ns/100m): 45

Characteristic Impedance (Ohms): 100 +/- 15



COM-Link Category 6 Patch Cord Premise Data Cables



Part Numbers		Available Put-Ups			
Jacket Color	Riser	1,000' Box	1,000' Reel	Bulk Reels	
BLUE	35800	X	X	X	
WHITE	35802	X	X	X	

Construction

- Conductor: 23 AWG Stranded Tinned Copper
- Tape Separator
- Color Code Per TIA-568-C.2

Insulation

- Riser: Polyolefin

Jacket

- Riser: Low-Smoke, Flame-Retardant PVC

Applications

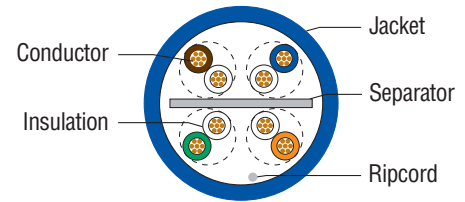
- Gigabit Ethernet (1000Base-T)

- Multimedia and ISDN
- High-Speed Voice/Data Applications
- 1.2 Gbps Ethernet
- Broadband Video
- Desktop Publishing

Compliances

- ETL Verified ANSI/TIA-568-C.2
- UL Listed Type CMR
- ICEA S-102-700
- NEC Article 800
- California State Fire Marshal
- RoHS Compliant

RISER: UL TYPE CMR
300 VOLT



Physical Data	Riser
Nominal Cable Diameter (inches)	.220
Nominal Cable Weight (lbs./1,000 ft.)	22.0
Temperature Rating (Celsius)	
Installation:	0 to +60
Operation:	-20 to +75

COM-Link Category 5e Patch Cord Premise Data Cables



Part Numbers		Available Put-Ups			
Jacket Color	Riser	1,000' Box	1,000' Reel	Bulk Reels	
BLUE	32579	X	X	X	
BLACK	32580	X	X	X	

Construction

- Conductor: 24 AWG Stranded Tinned Copper
- Color Code Per TIA-568-C.2

Insulation

- Riser: Polyolefin

Jacket

- Riser: Low-Smoke, Flame-Retardant PVC

Applications

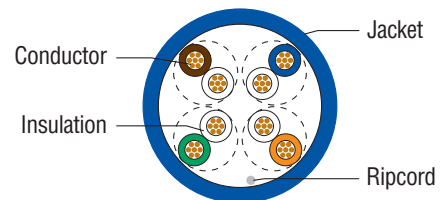
- Gigabit Ethernet (1000Base-T)
- Multimedia and ISDN

- High-Speed Voice/Data Applications
- 1.2 Gbps Ethernet
- Broadband Video
- Desktop Publishing

Compliances

- ETL Verified ANSI/TIA-568-C.2
- UL Listed Type CMR
- ICEA S-90-661
- NEC Article 800
- California State Fire Marshal
- RoHS Compliant

RISER: UL TYPE CMR
300 VOLT



Physical Data	Riser
Nominal Cable Diameter (inches)	.200
Nominal Cable Weight (lbs./1,000 ft.)	22.0
Temperature Rating (Celsius)	
Installation:	0 to +60
Operation:	-20 to +75

Electrical Characteristics Category 6 and 5e Patch Cord Premise Data Cables

DC Resistance (max.): 9.38

DC Resistance Unbalance (max.)
Individual Pair %: 5.0

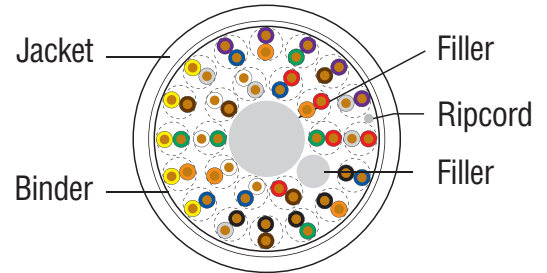
Nominal Velocity of Propagation
% Speed of Light: Riser: 68

Characteristic Impedance
(Ohms): 100 +/- 15

Propagation Delay Skew (max.)
(ns/100m): 45

RISER: UL TYPE CMR
PLENUM: UL TYPE CMP
 300 VOLT

COM-Link Category 5e Powersum Premise Data Cables



Construction

- Conductor: 24 AWG Solid Bare Copper
- Color Code Per TIA-568-C.2 (all solid colors)

Insulation

- Plenum: Fluoropolymer
- Riser: Polyolefin

Jacket

- Plenum: Flame-Retardant PVC
- Riser: Low-Smoke, Flame-Retardant PVC

Applications

- Gigabit Ethernet (1000Base-T)
- Multimedia and ISDN
- High-Speed Voice/Data Applications
- 1.2 Gbps Ethernet
- Broadband Video
- Desktop Publishing

Compliances

- ETL Verified ANSI/TIA-568-C.2
- UL Listed Type CMR
- UL Listed Type CMP
- ICEA S-90-661
- NEC Article 800
- California State Fire Marshal
- RoHS Compliant

Feature

- Used in system backbones that have more stringent design requirements and are more complex than voice system backbones

Part Numbers				Available Put-Ups		
Jacket Color	Riser	Plenum	1,000' Box	1,000' Reel	Bulk Reels	
BLUE	35303	35480		X	X	
WHITE	35301	35479		X	X	
GRAY	35302	35481		X	X	

Physical Data	Riser	Plenum
Nominal Cable Diameter (inches)	.510	.455
Nominal Cable Weight (lbs./1,000 ft.)	151	152
Temperature Rating (Celsius)		
Installation:	0 to +60	0 to +60
Operation:	-20 to +75	-20 to +75

Transmission Throughput

	Char. Impedance	Return Loss	Insertion Loss	NEXT	PSNEXT	ACRF	PSACRF
Freq.	(Ohms)	(dB)	(dB/100m)	(dB/100m)	(dB/100m)	(dB/100m)	(dB/100m)
(MHz)	(+/-15)	(Min.)	(Max.)	(Min.)	(Min.)	(Min.)	(Min.)
1	100	20	2	65.3	62.3	63.8	60.8
4	100	23	4.1	56.3	53.3	51.7	48.7
8	100	24.5	5.8	51.8	48.8	45.7	42.7
10	100	25	6.5	50.3	47.3	43.8	40.8
16	100	25	8.2	47.3	44.3	39.7	36.7
20	100	25	9.3	45.8	42.8	37.7	34.7
25	100	24.3	10.4	44.3	41.3	35.8	32.8
31.25	100	23.6	11.7	42.9	39.9	33.9	30.9
62.5	100	21.5	17	38.4	35.4	27.8	24.8
100	100	20.1	22	35.3	32.3	23.8	20.8

Electrical Characteristics

DC Resistance (max.): 9.38
 DC Resistance Unbalance (max.) Individual Pair %: 5.0

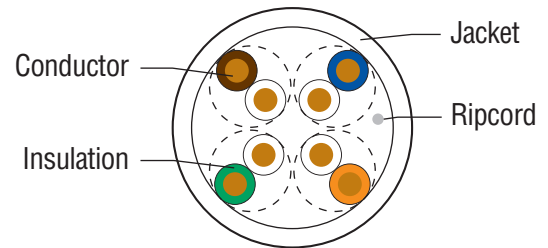
Nominal Velocity of Propagation % Speed of Light:
 Plenum: 72 Riser: 70

Characteristic Impedance (Ohms): 100 +/- 15
 Propagation Delay Skew (max.) (ns/100m): 45



COM-Link Category 5e 350 MHz UTP Premise Data Cables

RISER: UL TYPE CMR
PLENUM: UL TYPE CMP
 300 VOLT



Construction

- Conductor: 24 AWG Solid Bare Copper
- Color Code Per TIA-568-C.2

Insulation

- Plenum: Fluoropolymer
- Riser: Polyolefin

Jacket

- Plenum: Flame-Retardant PVC
- Riser: Low-Smoke, Flame-Retardant PVC

Applications

- Gigabit Ethernet (1000Base-T)
- Multimedia and ISDN
- High-Speed Voice/Data Applications
- 1.2 Gbps Ethernet
- Broadband Video
- Desktop Publishing

Compliances

- ETL Verified ANSI/TIA-568-C.2
- UL Listed Type CMR
- UL Listed Type CMP
- ICEA S-90-661
- NEC Article 800
- California State Fire Marshal
- RoHS Compliant

Part Numbers				Available Put-Ups		
Jacket Color	Riser	Plenum	1,000' Box	1,000' Reel	Bulk Reels	
BLUE	32883	32567	X	X	X	
WHITE	32881	32347	X	X	X	
GRAY	32882	32644	X	X	X	
GREEN	38654	32539	X	X	X	
YELLOW	38653	32820	X	X	X	

Physical Data	Riser	Plenum
Nominal Cable Diameter (inches)	.175	.165
Nominal Cable Weight (lbs./1,000 ft.)	18.0	20.0
Temperature Rating (Celsius)		
Installation:	0 to +60	0 to +60
Operation:	-20 to +75	-20 to +75
Pulling Force (max. lbs.)	25.0	25.0

Transmission Throughput

Freq.	Char. Impedance (Ohms)	Return Loss (dB)	Insertion Loss (dB/100m)	NEXT (dB/100m)	PSNEXT (dB/100m)	ACRF (dB/100m)	PSACRF (dB/100m)
(MHz)	(+/-15)	(Min.)	(Max.)	(Min.)	(Min.)	(Min.)	(Min.)
1	100	20	2	65.3	62.3	63.8	60.8
4	100	23	4.1	56.3	53.3	51.7	48.7
8	100	24.5	5.8	51.8	48.8	45.7	42.7
10	100	25	6.5	50.3	47.3	43.8	40.8
16	100	25	8.2	47.3	44.3	39.7	36.7
20	100	25	9.3	45.8	42.8	37.7	34.7
25	100	24.3	10.4	44.3	41.3	35.8	32.8
31.25	100	23.6	11.7	42.9	39.9	33.9	30.9
62.5	100	21.5	17	38.4	35.4	27.8	24.8
100	100	20.1	22	35.3	32.3	23.8	20.8
200	100	18	32.4	30.8	27.8	20	14.7
350	100	16.3	44.8	27.5	24.2	17	9.9

Electrical Characteristics

DC Resistance (max.): 9.38
 DC Resistance Unbalance (max.) Individual Pair %: 5.0

Nominal Velocity of Propagation % Speed of Light:
 Plenum: 72 Riser: 70

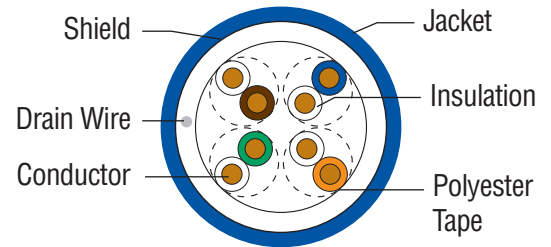
Characteristic Impedance (Ohms): 100 +/- 15
 Propagation Delay Skew (max.) (ns/100m): 45



RoHS Compliant

RISER: UL TYPE CMR
PLENUM: UL TYPE CMP
 300 VOLT

COM-Link Category 5e Shielded Premise Data Cables



Construction

- Conductor: 24 AWG Solid Bare Copper
- Color Code Per TIA-568-C.2
- Polyester Core Wrap
- 24 AWG Tinned Copper Drain Wire
- Aluminum/Polyester (aluminum side in)

Insulation

- Plenum: Fluoropolymer
- Riser: Polyolefin

Jacket

- Plenum: Flame-Retardant PVC
- Riser: Low-Smoke, Flame-Retardant PVC

Applications

- Gigabit Ethernet (1000Base-T)
- Multimedia and ISDN
- High-Speed Voice/Data Applications
- 1.2 Gbps Ethernet
- Broadband Video
- Desktop Publishing

Compliances

- ETL Verified ANSI/TIA-568-C.2
- UL Listed Type CMR
- UL Listed Type CMP
- ICEA S-90-661
- NEC Article 800
- California State Fire Marshal
- RoHS Compliant

Feature

- Shield reduces electromagnetic interference (EMI) for superior performance

Part Numbers

Jacket Color		Riser	Plenum	Available Put-Ups		
				1,000' Box	1,000' Reel	Bulk Reels
BLUE		32070	32854		X	X
WHITE		32906	32648		X	X
GRAY		38676	35973		X	X
GREEN		35905	35903		X	X

Physical Data	Riser	Plenum
Nominal Cable Diameter (inches)	.220	.215
Nominal Cable Weight (lbs./1,000 ft.)	26.0	29.0
Temperature Rating (Celsius)		
Installation:	0 to +60	0 to +60
Operation:	-20 to +75	-20 to +75
Pulling Force (max. lbs.)	25.0	25.0

Transmission Throughput

	Char. Impedance	Return Loss	Insertion Loss	NEXT	PSNEXT	ACRF	PSACRF
Freq.	(Ohms)	(dB)	(dB/100m)	(dB/100m)	(dB/100m)	(dB/100m)	(dB/100m)
(MHz)	(+/-15)	(Min.)	(Max.)	(Min.)	(Min.)	(Min.)	(Min.)
1	100	20	2	65.3	62.3	63.8	60.8
4	100	23	4.1	56.3	53.3	51.7	48.7
8	100	24.5	5.8	51.8	48.8	45.7	42.7
10	100	25	6.5	50.3	47.3	43.8	40.8
16	100	25	8.2	47.3	44.3	39.7	36.7
20	100	25	9.3	45.8	42.8	37.7	34.7
25	100	24.3	10.4	44.3	41.3	35.8	32.8
31.25	100	23.6	11.7	42.9	39.9	33.9	30.9
62.5	100	21.5	17	38.4	35.4	27.8	24.8
100	100	20.1	22	35.3	32.3	23.8	20.8

Electrical Characteristics

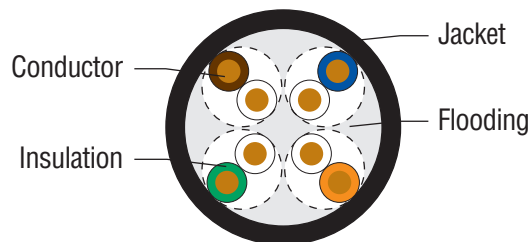
DC Resistance (max.): 9.38
 DC Resistance Unbalance (max.) Individual Pair %: 5.0

Nominal Velocity of Propagation % Speed of Light:
 Plenum: 70 Riser: 68

Characteristic Impedance (Ohms): 100 +/- 15
 Propagation Delay Skew (max.) (ns/100m): 45



COM-Link Category 5e OSP Premise Data Cables



Construction

- Conductor: 24 AWG Solid Bare Copper
- Color Code Per TIA-568-C.2

Insulation

- Polyolefin

Jacket

- UV Resistant Polyethylene

Flooding Compound

- Waterproof Gel

Applications

- Gigabit Ethernet (1000Base-T)
- Multimedia and ISDN
- High-Speed Voice/Data Applications
- 1.2 Gbps Ethernet
- Broadband Video
- Desktop Publishing
- Aerial and Duct Installations

Compliances

- ETL Verified ANSI/TIA-568-C.2
- ICEA S-90-661
- RoHS Compliant

Feature

- Protects against harmful environments that can cause electrical failures

Part Numbers		Available Put-Ups		
Jacket Color		1,000' Box	1,000' Reel	Bulk Reels
	35794	X	X	X

Physical Data	
Nominal Cable Diameter (inches)	.225
Nominal Cable Weight (lbs./1,000 ft.)	26.0
Temperature Rating (Celsius)	
Installation:	-30 to +60
Operation:	-45 to +80
Pulling Force (max. lbs.)	25.0

Transmission Throughput

	Char. Impedance	Return Loss	Insertion Loss	NEXT	PSNEXT	ACRF	PSACRF
Freq.	(Ohms)	(dB)	(dB/100m)	(dB/100m)	(dB/100m)	(dB/100m)	(dB/100m)
(MHz)	(+/-15)	(Min.)	(Max.)	(Min.)	(Min.)	(Min.)	(Min.)
1	100	20	2	65.3	62.3	63.8	60.8
4	100	23	4.1	56.3	53.3	51.7	48.7
8	100	24.5	5.8	51.8	48.8	45.7	42.7
10	100	25	6.5	50.3	47.3	43.8	40.8
16	100	25	8.2	47.3	44.3	39.7	36.7
20	100	25	9.3	45.8	42.8	37.7	34.7
25	100	24.3	10.4	44.3	41.3	35.8	32.8
31.25	100	23.6	11.7	42.9	39.9	33.9	30.9
62.5	100	21.5	17	38.4	35.4	27.8	24.8
100	100	20.1	22	35.3	32.3	23.8	20.8

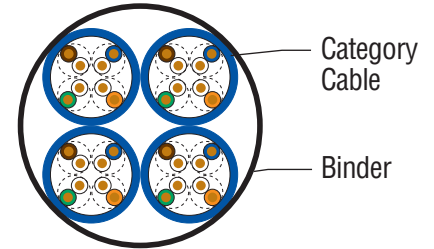
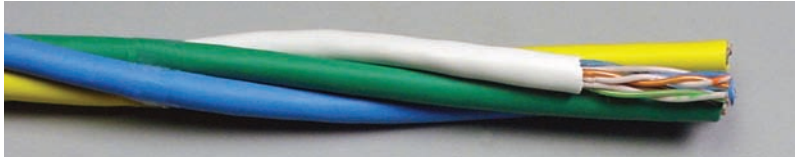
Electrical Characteristics

DC Resistance (max.): 9.38
DC Resistance Unbalance (max.) Individual Pair %: 5.0

Nominal Velocity of Propagation % Speed of Light: 68
Propagation Delay Skew (max.) (ns/100m): 45
Characteristic Impedance (Ohms): 100 +/- 15

RISER: UL TYPE CMR
PLENUM: UL TYPE CMP
 300 VOLT

COM-Link Category 5e and 6 Bundled Premise Data Cables



Construction

- Category 5e or 6 (up to 6 cables)
- Helically Applied Binder

Applications

- Gigabit Ethernet (1000Base-T)
- Multimedia and ISDN
- High-Speed Voice/Data Applications
- 1.2 Gbps Ethernet
- Broadband Video
- Desktop Publishing

Compliances

- ETL Verified ANSI/TIA-568-C.2
- UL Listed Type CMR
- UL Listed Type CMP
- ICEA S-90-661
- ICEA S-102-700
- NEC Article 800
- California State Fire Marshal
- RoHS Compliant

Features

- Offered in color-coded bundles for ease of installation
- Simplifies cable management

Electrical Characteristics

DC Resistance (max.): 9.38

DC Resistance Unbalance (max.)

Individual Pair %: 5.0

Nominal Velocity of Propagation

% Speed of Light: Plenum: 72 Riser: 70

Characteristic Impedance (Ohms): 100 +/- 15

Propagation Delay Skew (max.) (ns/100m): 45

Physical Data	Riser	Plenum
Category 5e Data		
Nominal Cable Diameter (inches)	.175	.165
Nominal Cable Weight (lbs./1,000 ft.)	18.0	20.0
Temperature Rating (Celsius)		
Installation:	0 to +60	0 to +60
Operation:	-20 to +75	-20 to +75
Category 6 Data		
Nominal Cable Diameter (inches)	.200	.190
Nominal Cable Weight (lbs./1,000 ft.)	25.0	23.0
Temperature Rating (Celsius)		
Installation:	0 to +60	0 to +60
Operation:	-20 to +75	-20 to +75

Category 5e Transmission Throughput

	Char. Impedance	Return Loss	Insertion Loss	NEXT	PSNEXT	ACRF	PSACRF
Freq.	(Ohms)	(dB)	(dB/100m)	(dB/100m)	(dB/100m)	(dB/100m)	(dB/100m)
(MHz)	(+/-15)	(Min.)	(Max.)	(Min.)	(Min.)	(Min.)	(Min.)
1	100	20	2	65.3	62.3	63.8	60.8
4	100	23	4.1	56.3	53.3	51.7	48.7
8	100	24.5	5.8	51.8	48.8	45.7	42.7
10	100	25	6.5	50.3	47.3	43.8	40.8
16	100	25	8.2	47.3	44.3	39.7	36.7
20	100	25	9.3	45.8	42.8	37.7	34.7
25	100	24.3	10.4	44.3	41.3	35.8	32.8
31.25	100	23.6	11.7	42.9	39.9	33.9	30.9
62.5	100	21.5	17	38.4	35.4	27.8	24.8
100	100	20.1	22	35.3	32.3	23.8	20.8

Category 6 Transmission Throughput

1	100	20	2	74.3	72.3	67.8	64.8
4	100	23	3.8	65.3	63.3	55.7	52.7
8	100	24.5	5.3	60.8	58.8	49.7	46.7
10	100	25	6	59.3	57.3	47.8	44.8
16	100	25	7.6	56.3	54.3	43.7	40.7
20	100	25	8.5	54.8	52.8	41.7	38.7
25	100	24.3	9.5	53.3	51.3	39.8	36.8
31.25	100	23.6	10.7	51.9	49.9	37.9	34.9
62.5	100	21.5	15.4	47.4	45.4	31.8	28.8
100	100	20.1	19.8	44.3	42.3	27.8	24.8
125	100	19.4	22.4	42.9	40.9	25.8	22.8
155.52	100	18.8	25.2	41.4	39.4	23.9	20.9
175	100	18.4	26.9	40.7	38.7	22.9	19.9
200	100	18	29	39.8	37.8	21.7	18.7
250	100	17.3	32.8	38.3	36.3	19.8	16.8



RoHS Compliant

Datacom Warranty and Connectivity Partnerships

At Comtran, quality and customer satisfaction are the center of our teams' focus. All Comtran's Datacom cable products have been independently third-party verified for performance to all applicable industry standards and codes. Comtran will warranty any of its Datacom products from Category 3 and higher with any connectivity that is also independently third-party verified.

Comtran Offers Two Levels of Warranty Protection: Comtran Standard Cable Warranty

Comtran's Standard Cable Warranty guarantees that our Datacom cables will be free from defects due to manufacture for a period of one (1) year from invoice date.

Please contact Comtran directly for more information and a copy of the full warranty at 1-508-399-7004.

Comtran Cable Network System 25-Year Extended Warranty

Comtran Cable offers a 25-year Network System Warranty that would include Link and Channel. These warranties will need to be registered with Comtran by the end user and will be administered by Comtran. These System Warranties are generally held by the connectivity manufacturer, but in the case where the connectivity is not held by one of our connectivity partners, Comtran will hold the System Warranty.

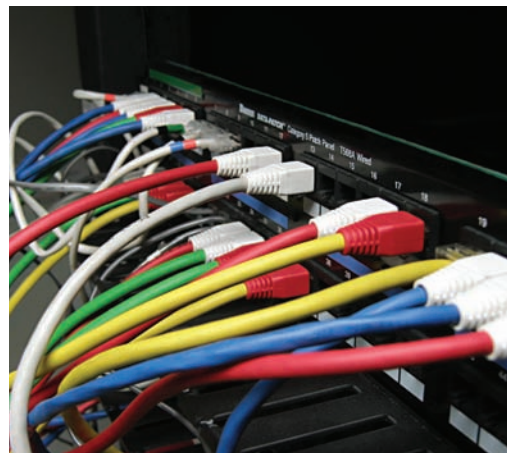
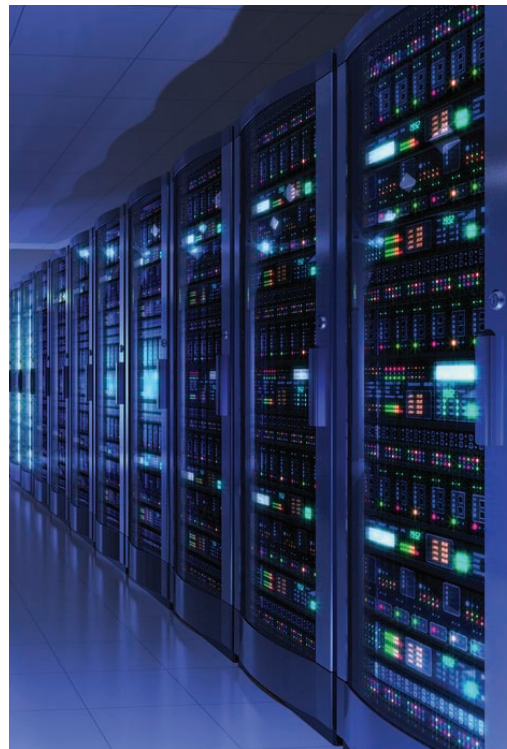
*(Contact Comtran and ask for the **Comtran Cable Network System Warranty** for full details)*

Connectivity Partners

Comtran Cable LLC Network Cable System Warranty is in alliance with the following connectivity partners:

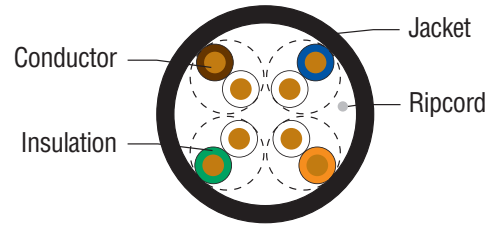
- Hellerman Tyton
- OCC
- Signamax
- Dynacom
- Other Third-Party Verified Performance Products

For the warranty to be provided, the system or cable must have been installed and tested in accordance with TIA/EIA 568C, ISO 11801 and BICSI specifications in effect at the time of the installation, and the connectivity components must be third-party verified to the appropriate TIA standards required by the category of the products.



UL TYPE CM-LS
300 VOLT

Category 6 and 5e LSZH Specialty Data Cables



Category 6 LSZH

Part Numbers		Available Put-Ups		
Jacket Color		1,000' Box	1,000' Reel	Bulk Reels
BLACK	35950	X	X	X

Physical Data	
Nominal Cable Diameter (inches)	.230
Nominal Cable Weight (lbs./1,000 ft.)	27.0
Temperature Rating (Celsius)	
Installation:	-20 to +60
Operation:	-20 to +60

Construction

- Conductor: 23 AWG Solid Bare Copper
- Color Code Per TIA-568-C.2

Insulation

- Polyolefin

Jacket

- Low-Smoke, Zero-Halogen

Applications

- Gigabit Ethernet (1000Base-T)
- Multimedia and ISDN

Compliances

- High-Speed Voice/Data Applications
- 1.2 Gbps Ethernet
- Broadband Video
- Desktop Publishing
- ETL Verified ANSI/TIA-568-C.2
- UL Listed Type CM-LS
- ICEA S-102-700
- NEC Article 800
- California State Fire Marshal
- RoHS Compliant

Category 5e LSZH

Part Numbers		Available Put-Ups		
Jacket Color		1,000' Box	1,000' Reel	Bulk Reels
BLACK	35951	X	X	X

Physical Data	
Nominal Cable Diameter (inches)	.215
Nominal Cable Weight (lbs./1,000 ft.)	25.0
Temperature Rating (Celsius)	
Installation:	-20 to +60
Operation:	-20 to +60

Construction

- Conductor: 24 AWG Solid Bare Copper
- Color Code Per TIA-568-C.2

Insulation

- Polyolefin

Jacket

- Low-Smoke, Zero-Halogen

Applications

- Gigabit Ethernet (1000Base-T)
- Multimedia and ISDN

Compliances

- High-Speed Voice/Data Applications
- 1.2 Gbps Ethernet
- Broadband Video
- Desktop Publishing
- ETL Verified ANSI/TIA-568-C.2
- UL Listed Type CM-LS
- ICEA S-90-661
- NEC Article 800
- California State Fire Marshal
- RoHS Compliant

Electrical Characteristics Category 6 and 5e LSZH Specialty Data Cables

DC Resistance (max.): 9.38
DC Resistance Unbalance (max.)
Individual Pair %: 5.0

Nominal Velocity of Propagation
% Speed of Light: 68

Characteristic Impedance
(Ohms): 100 +/- 15

Propagation Delay Skew (max.)
(ns/100m): 45



RoHS
Compliant



Category 6 Indoor/Outdoor LSZH Specialty Data Cables



Part Numbers		Available Put-Ups		
Jacket Color		1,000' Box	1,000' Reel	Bulk Reels
BLACK	35952	X	X	X

Construction

- Conductor: 23 AWG Solid Bare Copper
- Tape Separator
- Color Code Per TIA-568-C.2

Insulation

- Polyolefin

Jacket

- Low-Smoke, Zero-Halogen
- Tape Separator

Flooding Compound

- Waterproof Gel

Applications

- Gigabit Ethernet (1000Base-T)
- Multimedia and ISDN
- High-Speed Voice/Data Applications
- 1.2 Gbps Ethernet
- Broadband Video
- Desktop Publishing

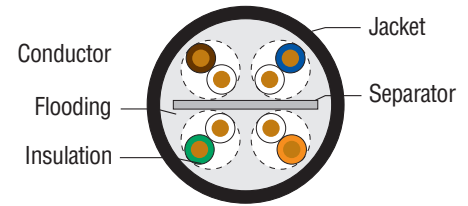
Compliances

- ETL Verified ANSI/TIA-568-C.2
- ICEA S-102-700
- RoHS Compliant
- UL Listed Type CM-LS
- California State Fire Marshal

Features

- Protects against harmful environments that can cause electrical failures
- Suitable for duct and aerial installations

UL TYPE CM-LS 300 VOLT



Physical Data	
Nominal Cable Diameter (inches)	.265
Nominal Cable Weight (lbs./1,000 ft.)	28
Temperature Rating (Celsius)	
Installation:	-20 to +60
Operation:	-20 to +60

Category 5e Indoor/Outdoor LSZH Specialty Data Cables



Part Numbers		Available Put-Ups		
Jacket Color		1,000' Box	1,000' Reel	Bulk Reels
BLACK	35953	X	X	X

Construction

- Conductor: 24 AWG Solid Bare Copper
- Color Code Per TIA-568-C.2

Insulation

- Polyolefin

Jacket

- Low-Smoke, Zero-Halogen

Flooding Compound

- Waterproof Gel

Applications

- Gigabit Ethernet (1000Base-T)
- Multimedia and ISDN

- High-Speed Voice/Data Applications
- 1.2 Gbps Ethernet
- Broadband Video
- Desktop Publishing

Compliances

- ETL Verified ANSI/TIA-568-C.2
- ICEA S-90-661

- RoHS Compliant
- UL Listed CM-LS

Features

- Protects against harmful environments that can cause electrical failures
- Suitable for duct and aerial installations

UL TYPE CM-LS 300 VOLT

Physical Data	
Nominal Cable Diameter (inches)	.225
Nominal Cable Weight (lbs./1,000 ft.)	26
Temperature Rating (Celsius)	
Installation:	-20 to +60
Operation:	-20 to +60

Electrical Characteristics Category 6 and 5e Indoor-Outdoor LSZH Specialty Data Cables

DC Resistance (max.): 9.38

DC Resistance Unbalance (max.)

Individual Pair %: 5.0

Nominal Velocity of Propagation
% Speed of Light: 68

Characteristic Impedance
(Ohms): 100 +/- 15

Propagation Delay Skew (max.)
ns/100m: 45

UL LISTED TYPE CM-LS
(LOW-SMOKE, ZERO-HALOGEN)
300 VOLT

Hub-LINK, LSZH Telecommunication and Data Transmission Cables for Transit Applications



NFPA 130-2010 compliant
for general use circuits

Applications

- Transit, Subways and Tunnels
- Various Mass Transportation Facilities
- Voice and Data

Performance Standards and Approvals

- UL Listed Type CMG-LS, CM-LS, CMG and CM
- UL 444
- NFPA-130-2010
- IEEE 1202/FT-4
- IEEE 383
- UL 1685
- UL 444
- Sunlight-Resistant Rated
- 90°C Rated Wet

Telecommunication Construction

- Conductor: #24 AWG through #16 AWG Sizes Available for Various Applications
- 2 through 100 Pairs Shielded and Unshielded Designs
- Conductors Available as well

Insulation

- Proprietary Blended LSZH Polyolefin
- Color-Coded Conductors Twisted to Varying Lays

Jacket

- Color-Coded Low-Smoke, Zero-Halogen Polyolefin

DataCom Construction

- Conductor: #23 AWG sbc 4PR (Cat. 6)
#24 AWG sbc 4PR (Cat. 5e)

Insulation

- Proprietary Blended LSZH Polyolefin
- Color-Coded Conductors Twisted to Varying Lays

Jacket

- Color-Coded Low-Smoke, Zero-Halogen Polyolefin

Hub-LINK, LSZH 90°C wet-rated telecommunications and data transmission cables are designed for use in mass transit applications. These cables provide extremely low toxicity levels under fire conditions while meeting UL CM-LS and IEEE 1202/FT4-LS flame and smoke requirements. The cables are extremely stable in mass transit applications such as fixed guideway or passenger railway tunnels and stations, cable trays in airports or any mass transit hub location where reduced toxins and flame spread are required.

In a fire, these materials aid in the safe egress of occupants.

- Low Smoke: In a fire, people can see their way out
- Low Toxicity: In a fire, people are not overcome by toxic fumes
- Halogen-Free: In a fire, there are no acid gas emissions which can damage equipment/buildings
- Flame Retardancy: Helps prevent a fire or limits the damage if one starts

Hub-LINK, LSZH Telecommunications Transmission Cables

Part No.	No. of Pairs	AWG	Jacket Color	Nominal Cable Diameter (inches)
35957	2	22	Chrome Gray	.270"
35958	4	22	Chrome Gray	.310"
35959	6	22	Chrome Gray	.360"
35960	12	22	Chrome Gray	.440"
35961	25	22	Chrome Gray	.570"
35962	50	22	Chrome Gray	.725"
35963	100	22	Chrome Gray	.970"

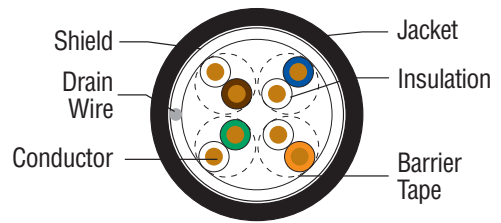
Hub-LINK, LSZH Datacom Transmission Cables

Part No.	No. of Pairs	AWG	Jacket Color	Nominal Cable Diameter (inches)
35977 (Cat 6)	4	23	Chrome Gray	.265"
35978 (Cat 5e)	4	24	Chrome Gray	.288"

Note: Many AWG sizes are available. Please call for more information.



X-Link Industrial Ethernet Specialty Data Cables



Jacket Color	CAT5e UTP	CAT5e F/UTP	CAT6 UTP	CAT6 F/UTP
BLACK	35974	35954	35975	35976
Cat3 UTP 4 pair through 300 pair available upon request				

Physical Data	Cat5e F/UTP
Nominal Cable Diameter (inches)	0.27
Nominal Cable Weight (lbs./1,000 ft.)	47
Temperature Rating (Celsius)	
Installation:	-25 to +90
Operation:	-40 to +90

Construction

- Conductor: 24 AWG Solid Bare Copper
- Flame Barrier Core Wrap
- 24 AWG Bare Copper Drain Wire
- Copper/Polyester (copper side in)
- Color Code Per TIA-568-C.2

Insulation

- Cross-Linked Polyethylene

Jacket

- Cross-Linked Polyethylene

Applications

- Gigabit Ethernet (1000Base-T)
- Multimedia and ISDN
- High-Speed Voice/Data Applications
- 1.2 Gbps Ethernet
- Broadband Video
- Desktop Publishing

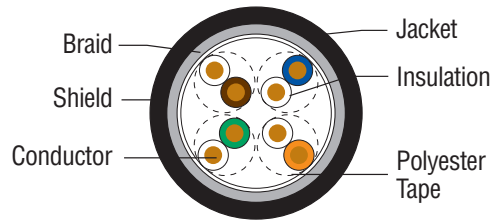
Compliances

- ETL Verified ANSI/TIA-568-C.2
- ICEA S-90-661, IEEE 383-1974 and 2003, IEEE 1202-1991 and FT-4

Features

- Shield reduces electromagnetic interference (EMI) for superior performance
- Thermoset insulation and jacket for enhanced thermal stability
- Improved fluid resistance
- Radiation resistant

Category 5e Industrial Ethernet Specialty Data Cables



Part Numbers		Available Put-Ups		
Jacket Color		1,000' Box	1,000' Reel	Bulk Reels
BLACK	35955		X	X

Physical Data	
Nominal Cable Diameter (inches)	0.265
Nominal Cable Weight (lbs./1,000 ft.)	45
Temperature Rating (Celsius)	
Installation:	0 to +60
Operation:	-20 to +75

Construction

- Conductor: 24 AWG Solid Bare Copper
- Color Code Per TIA-568-C.2

Insulation

- Polyolefin

Cable Assembly

- Polyester Tape
- Shield #1: Aluminum/Polyester

- Shield #2: 60% Tinned Copper Braid

Jacket

- Black UV-Resistant PVC

Applications

- Gigabit Ethernet (1000Base-T)
- Multimedia and ISDN
- High-Speed Voice/Data Applications
- 1.2 Gbps Ethernet

- Broadband Video
- Desktop Publishing

Compliances

- ETL Verified ANSI/TIA-568-C.2
- ICEA S-90-661 RoHS Compliant

- UL CMX Outdoor - CMR

Features

- Shield reduces electromagnetic interference (EMI) for superior performance

Electrical Characteristics Category 6 and 5e LSZH Specialty Data Cables

DC Resistance (max.): 9.38

DC Resistance Unbalance (max.)

Individual Pair %: 5.0

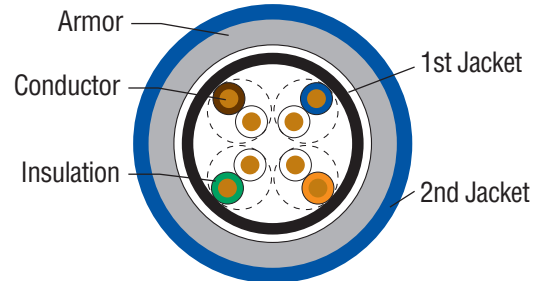
Nominal Velocity of Propagation
% Speed of Light: 68

Characteristic Impedance
(Ohms): 100 +/- 15

Propagation Delay Skew (max.)
(ns/100m): 45

300 VOLT

Industrial Continuously Welded/Corrugated Datacom and Telecommunications Cables



Applications

- Gigabit Transmissions (Category 6, 5e and 3)
- High-Speed Voice/Data
- Broadband Video
- Cameras
- Sound
- Security
- Electronic

Construction

- Design-Dependent

Insulation

- Various Thermoplastic, Polyolefin and Fluoropolymer

Armor

- Rugged Continuous Corrugated and Welded Aluminum or Copper Armor

Overall Jacket

- Thermoplastic and Fluoropolymer Industrial Jackets



Industrial Continuously Welded/Corrugated Datacom and Telecommunications Cables

Industrial continuously corrugated and welded telecommunication, sound, security and electronic cables. These robust cables are designed for various applications and are suitable for harsh and industrial environments.

Features/Usage

- Welded armor forms an impervious barrier
- Self-contained conduit and wiring system
- Superior mechanical isolation
- Cable protection throughout
- Offers cut through protection
- Sunlight-resistant
- Armor is impact- and crush-resistant
- Oil- and moisture-resistant
- Industrial environments
- Cold temperatures



Communications Cables

**PLENUM LOW-SMOKE
PVC JACKET
UL TYPE CMP
C(UL) CMP 300 VOLT**

Applications

- Voice
- 10BaseT
- 100Base VG AnyLAN
- 4 Mbps Token Ring
- 10 Mbps Ethernet
- 55 Mbps ATM
- ISDN
- Low-Speed Data
- RS-232
- ISDN (Basic Rate)
- Intermediate Speed Data

Characteristics

Operating Temperature:

- -10°C to +75°C

Voltage Rating:

- 300 Volts

Color Description:

- Page 36

Product Description:

- Solid Bare Copper
- Insulation: Plenum Low-Smoke PVC
- Ripcord
- Jacket: Plenum Low-Smoke PVC or PVDF
- **32670** - Pairs Cabled with an Overall Aluminum/Polyester Shield and a 24 AWG Solid Tinned Copper Drain Wire

Specifications:

- UL Type CMP
- C(UL) CMP
- Passes NFPA 262 (UL 910) Flame Test
- TIA 568-C.2 Category 3 (4-pair ETL verified)
- RoHS Compliant



Plenum Category 3 Communications Cable

24 AWG Solid Bare Copper				
Part No.	No. of Pairs	Jacket Thickness (inches)	Jacket Color	Nominal Diameter (inches)
32113	2	.014	White	.135
32114	3	.014	White	.148
34757	3	.014	Green	.148
32115	4	.014	White	.165
32222	4	.014	Chrome Gray	.165
34758	4	.014	Green	.165
32628	6	.014	White	.189
32630	12	.014	White	.268
32631	25	.015	White	.375
34765	25	.015	Green	.375
32632	50	.020	White	.539
32633	100	.020	White	.775
32870	200	.050	White	1.041
32871	300	.050	White	1.533
35968	400	.050	White	1.69

Plenum Communications Cable

22 AWG Solid Bare Copper				
Part No.	No. of Pairs	Jacket Thickness (inches)	Jacket Color	Nominal Diameter (inches)
32675	2	.014	White	.150
32676	3	.014	White	.159



Plenum Shielded Communications Cable

24 AWG Solid Bare Copper				
Part No.	No. of Pairs	Jacket Thickness (inches)	Jacket Color	Nominal Diameter (inches)
32670	25	.016	White	.342

RISER FR PVC JACKET
UL TYPE CMR
C(UL) CMG 300 VOLT

Communications Cables



Applications

- Voice
- 10BaseT
- 100Base VG AnyLAN
- 4 Mbps Token Ring
- 10 Mbps Ethernet
- 55 Mbps ATM
- ISDN

Characteristics

Operating Temperature:

- -10°C to +75°C

Voltage Rating:

- 300 Volts

Color Description:

- Page 36

Product Description:

- Solid Bare Copper
- Insulation: Semi-Rigid PVC
- Ripcord
- Jacket: Flame-Retardant PVC

Specifications:

- UL Type CMR
- C(UL) CMG
- Passes UL 1666 Flame Test
- RoHS Compliant
- TIA 568-C.2 Category 3 (4-pair ETL verified)

Riser Category 3 Communications Cable

24 AWG Solid Bare Copper				
Part No.	No. of Pairs	Jacket Thickness (inches)	Jacket Color	Nominal Diameter (inches)
33559	2	.014	Gray	.135
33560	3	.014	Gray	.140
33561	4	.014	Gray	.157
33570	25	.015	Gray	.343
33572	50	.022	Gray	.497
33574	100	.024	Gray	.695
33548	200	.032	Gray	1.014
33555	300	.032	Gray	1.220
35969	400	.032	Gray	1.354



Applications

- Analog Voice
- Low-Speed Data
- RS-232
- ISDN (Basic Rate)

Characteristics

Operating Temperature:

- -10°C to +75°C

Voltage Rating:

- 300 Volts

Color Description:

- Page 36

Product Description:

- Solid Bare Copper
- Insulation: Semi-Rigid PVC
- Pairs Cabled with an Overall Aluminum/Polyester Shield and a 24 AWG Solid Tinned Copper Drain Wire
- Ripcord
- Jacket: Flame-Retardant PVC

Specifications:

- UL Type CMR
- C(UL) CMG
- Passes UL 1666 Flame Test
- RoHS Compliant

Shielded Riser Communications Cable

22 AWG Solid Bare Copper				
Part No.	No. of Pairs	Jacket Thickness (inches)	Jacket Color	Nominal Diameter (inches)
33579	2	.014	Gray	.138
33580	3	.014	Gray	.146
33589	25	.016	Gray	.339
22 AWG Solid Tinned Copper				
34061	32	.020	Gray	.385



RoHS Compliant

Fire Alarm Cables

**PLENUM LOW-SMOKE
PVC JACKET**
UL TYPE FPLP/CMP/CL3P
C(UL) CMP 300 VOLT



Applications

- Fire Alarm, Signal
- Monitor/Detection
- Audio or Control Circuits

Characteristics

Operating Temperature:

- -10°C to +75°C

Voltage Rating:

- 300 Volts

Color Description:

- Chart F, Page 37

Product Description:

- Solid/Stranded Bare Copper
- Insulation: Plenum Low-Smoke PVC
- Nylon Ripcord for Ease of Jacket Stripping
- Jacket: Plenum Low-Smoke PVC

Specifications:

- UL Type FPLP/CMP/CL3P
- C(UL) CMP (14 and 12 AWG FPLP/CL3P only)
- Passes NFPA 262 (UL 910) Flame Test
- RoHS Compliant

Plenum Fire Alarm Cable

Part No.	No. of Cond.	Jacket Thickness (inches)	Jacket Color	Nominal Diameter (inches)
18 AWG Solid Bare Copper				
38704	2	.014	Red	.136
38705	4	.014	Red	.159
32763	2	.014	White	.136
32520	2	.014	Blue	.136
32523	2	.014	Orange	.136
32528	2	.014	Green	.136
33293	2	.014	Yellow	.136
33292	2	.014	Black	.136
16 AWG Solid Bare Copper				
38706	2	.014	Red	.158
32573	2	.014	White	.158
32521	2	.014	Blue	.158
32524	2	.014	Orange	.158
32529	2	.014	Green	.158
33291	2	.014	Yellow	.158
33290	2	.014	Black	.158
38708	4	.014	Red	.185
14 AWG Solid Bare Copper				
38709	2	.014	Red	.192
32035	2	.014	White	.192
32522	2	.014	Blue	.192
32525	2	.014	Orange	.192
32532	2	.014	Green	.192
33289	2	.014	Yellow	.192
33288	2	.014	Black	.192
38710	4	.014	Red	.226

Plenum Fire Alarm Cable (Mid-Cap)

Part No.	No. of Cond.	Jacket Thickness (inches)	Jacket Color	Nominal Diameter (inches)
16 AWG Solid Bare Copper				
34893	2	.014	Red	.166
14 AWG Solid Bare Copper				
34883	2	.014	Red	.200
12 AWG Solid Bare Copper				
34977	2	.014	Red	.234

**PLENUM LOW-SMOKE
PVC JACKET**
UL TYPE FPLP/CMP/CL3P
C(UL) CMP 300 VOLT

Shielded Fire Alarm Cables



Applications

- Fire Alarm, Signal
- Monitor/Detection
- Audio or Control Circuits

Characteristics

Operating Temperature:

- -10°C to +75°C

Voltage Rating:

- 300 Volts

Color Description:

- Chart F, Page 37

Product Description:

- Solid Bare Copper
- Insulation: Plenum Low-Smoke PVC
- Conductors Cabled with an Overall Aluminum/Polyester Shield and a Drain Wire
- Nylon Ripcord for Ease of Jacket Stripping
- Jacket: Plenum Low-Smoke PVC

Specifications:

- UL Type FPLP/CMP/CL3P
- C(UL)US CMP (14 and 12 AWG FPLP/CL3P only)
- Passes NFPA 262 (UL 910) Flame Test
- RoHS Compliant

Shielded Plenum Fire Alarm Cable

Part No.	No. of Cond.	Jacket Thickness (inches)	Jacket Color	Nominal Diameter (inches)
18 AWG Solid Bare Copper				
34914	2	.014	Red	.139
38673	2	.014	White	.139
32026	2	.014	Blue	.139
33789	2	.014	Yellow	.139
16 AWG Solid Bare Copper				
34909	2	.014	Red	.161
32991	2	.014	Blue	.169
38667	2	.014	Yellow	.169
14 AWG Solid Bare Copper				
34888	2	.014	Red	.195



RoHS
Compliant

Fire Alarm Cables

RISER FR PVC JACKET
 UL TYPE FPLR/CMR/CL3R
 C(UL) CMG 300 VOLT



Applications

- Fire Alarm, Signal
- Monitor/Detection
- Audio or Control Circuits

Characteristics

Operating Temperature:

- -10°C to +75°C

Voltage Rating:

- 300 Volts

Color Description:

- Chart F, Page 37

Product Description:

- Solid/Stranded Bare Copper
- Insulation: Semi-Rigid PVC
- Nylon Ripcord for Ease of Jacket Stripping
- Jacket: Flame-Retardant PVC

Specifications:

- UL Type FPLR/CMR/CL3R
- C(UL) CMG (14 AWG FPLR/CL3R only)
- Passes UL 1666 Riser Flame Test
- RoHS Compliant

Riser Fire Alarm Cable

Part No.	No. of Cond.	Jacket Thickness (inches)	Jacket Color	Nominal Diameter (inches)
18 AWG Solid Bare Copper				
38696	2	.014	Red	.136
38697	4	.014	Red	.158
33658	2	.014	White	.136
32533	2	.014	Blue	.136
33817	2	.014	Yellow	.136
16 AWG Solid Bare Copper				
38698	2	.014	Red	.158
38699	4	.014	Red	.185
38860	2	.014	White	.158
32537	2	.014	Blue	.158
32542	2	.014	Orange	.158
32546	2	.014	Green	.158
33617	2	.014	Yellow	.158
14 AWG Solid Bare Copper				
38700	2	.014	Red	.192
33735	2	.014	White	.192
32538	2	.014	Blue	.192
32543	2	.014	Orange	.192
32548	2	.014	Green	.192
33551	2	.014	Yellow	.192
33779	2	.014	Black	.192

Riser Fire Alarm Cable (Mid-Cap)

Part No.	No. of Cond.	Jacket Thickness (inches)	Nominal Diameter (inches)
22 AWG Solid Bare Copper			
34304	4	.014	.120
16 AWG Solid Bare Copper			
34236	4	.014	.194

RISER FR PVC JACKET
 UL TYPE FPLR/CMR/CL3R
 C(UL) CMG 300 VOLT

Shielded Fire Alarm Cables



Applications

- Fire Alarm, Signal
- Monitor/Detection
- Audio or Control Circuits

Characteristics

Operating Temperature:

- -10°C to +75°C

Voltage Rating:

- 300 Volts

Color Description:

- Chart F, Page 37

Product Description:

- Solid Bare Copper
- Insulation: Semi-Rigid PVC
- Conductors Cabled with an Overall Aluminum/Polyester Shield and a Drain Wire
- Nylon Ripcord for Ease of Jacket Stripping
- Jacket: Flame-Retardant PVC

Specifications:

- UL Type FPLR/CMR/CL3R
- C(UL) CMG (14 AWG FPLR/CL3R only)
- Passes UL 1666 Riser Flame Test
- RoHS Compliant

Shielded Riser Fire Alarm Cable

Part No.	No. of Cond.	Jacket Thickness (inches)	Jacket Color	Nominal Diameter (inches)
18 AWG Solid Bare Copper				
34228	2	.014	Red	.142
38622	2	.014	Blue	.142
33611	2	.014	Yellow	.142
16 AWG Solid Bare Copper				
34237	2	.014	Red	.161
33610	2	.014	Blue	.161
33612	2	.014	Yellow	.161
14 AWG Solid Bare Copper				
34242	2	.014	Red	.195



Fire Alarm/EVAC Cables

UL LISTED TYPE FPLR
LOW-SMOKE, ZERO-HALOGEN



Applications

- (EVAC) Emergency Voice-Alarm Communication
- Smoke/Fire Alarm Systems
- Emergency Lighting
- Fireman's Telephone and Area of Refuge Communication Systems

Specifications

Conductors:

- 12 thru 18AWG Solid Cu. Specially Engineered to Minimize Embrittlement Due to Fire Exposure

Insulation:

- Proprietary Low-Smoke, Zero-Halogen Thermoset Fire-Roc™ Layer

Core Assembly:

- Color-Coded Conductors
2/C: Black, Red

Tape:

- Overall Clear Polyester Tape Applied over Core

Jacket:

- Red Low-Smoke, Zero-Halogen Polyolefin (Sequential Footage Marker Provided Every Several Feet)

Approvals

- UL 1424 Listed FPLR
- CSA C22.2 No 208-03 FT-4 (FAS 90)
- IEEE 1202
- California State Fire Marshall

Features

- Sunlight-resistant, wet location suitable cable rated for 90°C and easily pulled/stripped with low-friction jacket

VITALink® Cable is designed to support life and fire safety. These cables offer “survivability” for two hours in harsh environments while being fully operational in order to ensure safe evacuation of building occupants.

Two-Hour Fire-Rated Low-Smoke, Zero-Halogen

Part No.	No. of Cond.	AWG	Nominal Cable Diameter (inches)	Nominal Weight (lbs./ft.)	Nominal Capacitance (pF/ft.)
35775	2	18	.311	44	15
35777	2	16	.313	53	17
35779	2	14	.339	66	19
35781	2	12	.373	91	21



VITALink® is a registered trademark of RSCC Wire & Cable LLC, a Marmon Wire & Cable/Berkshire Hathaway Company.



UL LISTED TYPE FPLR
LOW-SMOKE, ZERO-HALOGEN

Shielded Fire Alarm/EVAC Cables



Applications

- (EVAC) Emergency Voice-Alarm Communication
- Smoke/Fire Alarm Systems
- Emergency Lighting
- Fireman's Telephone and Area of Refuge Communication Systems

Specifications

Conductors:

- 12 thru 18AWG Solid Cu. Specially Engineered to Minimize Embrittlement Due to Fire Exposure

Insulation

- Proprietary Low-Smoke, Zero-Halogen Thermoset Fire-Roc™ Layer

Core Assembly:

- Color-Coded Conductors
2/C: Black, Red

Shield:

- Copper/Polyester Tape Applied over Core

Drain Wire:

- Stranded Bare Copper

Jacket:

- Red Low-Smoke, Zero-Halogen Polyolefin (Sequential Footage Marker Provided Every Several Feet)

Approvals

- UL 1424 Listed FPLR
- CSA C22.2 No 208-03 FT-4 (FAS 90)
- IEEE 1202
- California State Fire Marshall

Features

- Sunlight-resistant, wet location suitable cable rated for 90°C and easily pulled/stripped with low-friction jacket

VITALink® Cable is designed to support life and fire safety. These cables offer “survivability” for two hours in harsh environments while being fully operational in order to ensure safe evacuation of building occupants.

Two-Hour Fire-Rated Low-Smoke, Zero-Halogen

Part No.	No. of Cond	AWG	Nominal Cable Diameter (inches)	Nominal Weight (lbs./ft.)	Nominal Capacitance (pF/ft.)
35783	2	18	.315	51	26
35785	2	16	.315	60	30
35787	2	14	.342	76	36
35789	2	12	.376	103	43



VITALink® is a registered trademark of RSCC Wire & Cable LLC, a Marmon Wire & Cable/Berkshire Hathaway Company.



Sound and Security Cables

**PLENUM LOW-SMOKE
PVC JACKET**
UL TYPE CL3P/FPLP/CMP
C(UL) CMP 300 VOLT



Applications

- Intercom/PA Systems
- Sound/Audio Systems

Characteristics

Operating Temperature:

- -10°C to +75°C

Voltage Rating:

- 300 Volts

Color Description:

- Chart A, Page 37

Product Description:

- Solid, Stranded Bare Copper
- Insulation: Plenum Low-Smoke PVC
- Nylon Ripcord for Ease of Jacket Stripping
- Jacket: Plenum Low-Smoke PVC

Specifications:

- UL Type CL3P/FPLP
- C(UL)US CMP (14 and 12 AWG UL only)
- Passes NFPA 262 (UL 910) Flame Test
- RoHS Compliant

* Color Code: Black, Red

Plenum Sound and Security Cable

Part No.	No. of Cond.	Jacket Thickness (inches)	Jacket Color	Nominal Diameter (inches)
22 AWG 7-Strand Bare Copper				
34950	2	.014	White	.111
34952	4	.014	White	.128
34954	6	.014	White	.153
34956	8	.014	White	.165
18 AWG 7-Strand Bare Copper				
*34842	2	.014	White	.148
38748	2	.014	White	.148
34843	3	.014	White	.158
34844	4	.014	White	.172
34846	6	.014	White	.208
34848	8	.014	White	.227
34850	10	.014	White	.268
18 AWG Solid Bare Copper				
34829	2	.014	White	.136
34830	3	.014	White	.145
34833	6	.014	White	.190
32178	8	.014	White	.207
32180	10	.014	White	.244
16 AWG 19-Strand Bare Copper				
*32282	2	.014	White	.182
32284	4	.014	White	.214
14 AWG 19-Strand Bare Copper				
*32208	2	.014	White	.212
38752	2	.014	White	.212
32209	3	.014	White	.227
32210	4	.014	White	.250
12 AWG 19-Strand Bare Copper				
32729	2	.014	White	.248

**PLENUM LOW-SMOKE
PVC JACKET**
UL TYPE CL3P/FPLP/CMP
C(UL) CMP 300 VOLT

Shielded Sound and Security Cables



Applications

- Intercom/PA Systems
- Sound/Audio Systems

Characteristics

Operating Temperature:

- -10°C to +75°C

Voltage Rating:

- 300 Volts

Color Description:

- Chart A, Page 37

Product Description:

- Stranded Bare Copper
- Insulation: Plenum PVC
- Conductors Cabled with an Overall Aluminum/Polyester Shield and a Drain Wire
- Nylon Ripcord for Ease of Jacket Stripping
- Jacket: Plenum PVC
- Twisted Pairs Cabled with an Overall Aluminum/Polyester Shield and a Drain Wire

Specifications:

- UL Type CL3P/FPLP
- C(UL)US CMP (14 AWG CL3P/FPLP only)
- Passes NFPA 262 (UL 910) Flame Test
- RoHS Compliant

* Color Code: Pair 1, Black/White;
Pair 2, Red/Green

** Color Code: Black, Red

*** Color Code: Pair 1: Black/Red;
Pair 2, Black/White

Shielded Plenum Sound and Security Cable

Part No.	No. of Cond.	Jacket Thickness (inches)	Jacket Color	Nominal Diameter (inches)
18 AWG 7-Strand Bare Copper				
**34853	2	.014	White	.151
38749	2	.014	White	.151
34854	3	.014	White	.161
34855	4	.014	White	.175
34857	6	.014	White	.211
34859	8	.014	White	.230
34861	10	.014	White	.271
16 AWG 19-Strand Bare Copper				
**32172	2	.014	White	.185
32174	4	.014	White	.217
14 AWG 19-Strand Bare Copper				
**32214	2	.014	White	.215

Part No.	No. of Cond.	Jacket Thickness (inches)	Jacket Color	Nominal Diameter (inches)	Operating Temp.
22 AWG 7-Strand Bare Copper					
34869	2	.014	White	.114	-10°C to +60°C
34871	4	.014	White	.130	-10°C to +60°C
34873	6	.014	White	.156	-10°C to +75°C
34875	8	.014	White	.168	-10°C to +75°C

Part No.	No. of Pairs	Jacket Thickness (inches)	Jacket Color	Nominal Diameter (inches)
22 AWG 7-Strand Tinned Copper, Overall Shielded				
***32060	2	.014	White	.164
18 AWG 7-Strand Bare Copper, Individually Shielded				
*32708	2	.014	White	.223



Sound and Security Cables

RISER FR PVC JACKET
 UL TYPE CL3R/FPLR/CMR
 C(UL) CMG 300 VOLT



Applications

- Intercom/PA Systems
- Sound/Audio Systems

Characteristics

Operating Temperature:

- -10°C to +75°C

Voltage Rating:

- 300 Volts

Color Description:

- Chart A, Page 37

Product Description:

- Stranded Bare Copper
- Insulation: Semi-Rigid PVC
- Nylon Ripcord for Ease of Jacket Stripping
- Jacket: Flame-Retardant PVC

Specifications:

- UL Type CL3R /FPLR /CMR
- C(UL) CMG
(14 AWG CL3R/FPLR only)
- Passes UL 1666 Flame Test
- RoHS Compliant

Riser Sound and Security Cable

Part No.	No. of Cond.	Jacket Thickness (inches)	Jacket Color	Nominal Diameter (inches)
22 AWG 7-Strand Bare Copper				
32772	2	.014	Chrome Gray	.111
32774	4	.014	Chrome Gray	.128
32776	6	.014	Chrome Gray	.153
32778	8	.014	Chrome Gray	.165
18 AWG 7-Strand Bare Copper				
32794	2	.014	Chrome Gray	.148
32795	3	.014	Chrome Gray	.158
32796	4	.014	Chrome Gray	.172
32798	6	.014	Chrome Gray	.208
32800	8	.014	Chrome Gray	.227
16 AWG 19-Strand Bare Copper				
32836	2	.014	Chrome Gray	.182
32837	4	.014	Chrome Gray	.214
14 AWG 19-Strand Bare Copper				
32840	2	.014	Chrome Gray	.212

RISER FR PVC JACKET
 UL TYPE CL3R/FPLR/CMR
 C(UL) CMG 300 VOLT

Shielded Sound and Security Cables



Applications

- Intercom/PA Systems
- Sound/Audio Systems

Characteristics

Operating Temperature:

- -10°C to +75°C

Voltage Rating:

- 300 Volts

Color Description:

- Chart A, Page 37

Product Description:

- Stranded Bare Copper
- Insulation: Semi-Rigid PVC
- Conductors Cabled with an Overall Aluminum/Polyester Shield and a Drain Wire
- Nylon Ripcord for Ease of Jacket Stripping
- Jacket: Flame-Retardant PVC

Specifications:

- UL Type CL3R /FPLR /CMR
- C(UL) CMG
- Passes UL 1666 Flame Test
- RoHS Compliant

Shielded Riser Sound and Security Cable

Part No.	No. of Cond.	Jacket Thickness (inches)	Jacket Color	Nominal Diameter (inches)
22 AWG 7-Strand Bare Copper				
32783	2	.014	Chrome Gray	.114
32785	4	.014	Chrome Gray	.131
32787	6	.014	Chrome Gray	.156
32789	8	.014	Chrome Gray	.168
18 AWG 7-Strand Bare Copper				
32805	2	.014	Chrome Gray	.151
32806	3	.014	Chrome Gray	.161
32807	4	.014	Chrome Gray	.175
32809	6	.014	Chrome Gray	.211
16 AWG 19-Strand Bare Copper				
32838	2	.014	Chrome Gray	.179



RoHS
Compliant

Composite Security Cables

**PLENUM LOW-SMOKE PVC JACKET
RISER FR PVC JACKET**
UL TYPE CL3P/CL3R
C(UL)US CMP/CMR 300 VOLT



Applications

- Multiple Door Control

Characteristics

Operating Temperature:

- -10°C to +75°C

Voltage Rating:

- 300 Volts

Color Description:

- Color Code Chart below Table
- Inner Jackets Provided with Color-Coded Stripe for Easy Identification

Product Description:

- Stranded Bare Copper
- Insulation: Plenum Low-Smoke PVC, Riser FR PVC
- Overall Aluminum/Polyester Shield and Drain Wire on Selected Elements
- Nylon Ripcord for Ease of Jacket Stripping
- Jacket: #34269 Plenum Low-Smoke PVC
- Jacket: #35170 Plenum Low-Smoke PVC

Specifications:

- #34269: UL Type CL3P
- C(UL)US CMP
- #35170: UL Type CL3R
- C(UL)US CMR
- Passes NFPA 262 (UL 910) Flame Test (CMP)
- RoHS Compliant

Plenum/Riser 4 Element Composite Sound and Security Cable

Part No.	No. of Cond.	Jacket Thickness (inches)	Jacket Color	Nominal Diameter (inches)
22 and 18 AWG 7-Strand Bare Copper 4 Cable Composite				
34269	16	.022	Yellow	.405
35170	16	.022	Green	.405

CABLE DESCRIPTION			
No. of Cond.	Jacket Thickness (inches)	Jacket Color	Nominal Diameter (inches)
CABLE #1 LOCK POWER 18 AWG 7-Strand Bare Copper, Unshielded, Ripcord			
4	.014	White w/Violet Stripe	.180
No. of Pairs	Jacket Thickness (inches)	Jacket Color	Nominal Diameter (inches)
CABLE #2 CARD READER 22 AWG 7-Strand Bare Copper, Shielded, Ripcord			
3	.014	White w/Yellow Stripe	.180
No. of Cond.	Jacket Thickness (inches)	Jacket Color	Nominal Diameter (inches)
CABLE #3 DOOR CONTACT 22 AWG 7-Strand Bare Copper, Unshielded, Ripcord			
2	.014	White w/Green Stripe	.120
CABLE #4 REX/SPARE 22 AWG 7-Strand Bare Copper, Unshielded, Ripcord			
4	.014	White w/Red Stripe	.140

CONDUCTOR COLOR CODE	
Cable 1 and 4	Black, White, Red, Green
Cable 2	Green-White, Black-Red, Brown-Orange
Cable 3	Black, Red

**PLENUM LOW-SMOKE
PVC JACKET**

Shielded Sound and Security Cables



UL TYPE CL3P/FPLP/CMP
C(UL) CMP 300 VOLT

Applications

- Intercom/PA Systems
- Sound/Audio Systems

Characteristics

Operating Temperature:

- -10°C to +75°C

Voltage Rating:

- 300 Volts

Product Description:

- Stranded Tinned Copper
- Insulation: Plenum PVC

- Individually Aluminum/ Polyester Shielded Pairs Cabled Together, Each with a Drain Wire or One Common Drain Wire

- Nylon Ripcord for Ease of Jacket Stripping

- Jacket: Plenum Low-Smoke PVC

Specifications:

- UL Type CL3P
- C(UL)US CMP
- Passes NFPA 262 (UL 910) Flame Test
- RoHS Compliant

Individually Shielded Plenum Sound and Security Cable

Part No.	No. of Pairs	Jacket Thickness (inches)	Jacket Color	Nominal Diameter (inches)
22 AWG 7-Strand Tinned Copper				
*†32065	2	.014	White	.135

* Color Code: Pair 1, Black/Red; Pair 2, Green/White
† Common drain wire



FLEXIBLE PVC JACKET
UL TYPE CM AND CL3,
C(UL) CMH 300 VOLT
AWM 2919 80°C 30 VOLT

Characteristics

Operating Temperature:

- -20°C to +80°C

Voltage Rating:

- CM: 300 Volts
- AWM 2919: 30 Volts

Color Description:

- Chart D, Page 37

Product Description:

- Stranded Tinned Copper
- Insulation: Polyethylene or Polypropylene

- Pairs Cabled with an Overall Aluminum/ Polyester Shield and a Drain Wire
- Jacket: Flexible PVC

Specifications:

- UL Type CM
- C(UL) CMH
- AWM Style 2919 80°C 30 Volts
- Passes UL 1685 Flame Test
- RoHS Compliant

Overall Shielded and Individually Shielded Multipair Cable

OVERALL SHIELD TYPE CL3, NO C(UL)				
Part No.	No. of Pairs	Jacket Thickness (in.)	Jacket Color	Nominal Diameter (in.)
24 AWG 7-Strand Tinned Copper, Overall Shielded				
35712	4 1/2	.032	Gray	.275
18 AWG 16-Strand Tinned Copper, Individually Shielded				
37301	2	.032	Chrome	.263
37302	3	.032	Chrome	.313



Specialty Electronic Cables

AWM STYLES



FLEXIBLE PVC JACKET
 UL TYPE CM, C(UL) CMG
 AWM 2464 80°C 300 VOLT

Characteristics

Operating Temperature:

- 30°C to +80°C

Voltage Rating:

- 300 Volts

Color Description:

- Chart A, Page 37
- * 37312 Color Code:
 Pair 1, Black/Red;
 Pair 2, Green/White

Product Description:

- Stranded Tinned Copper

- Insulation: PVC
- Pairs or Conductors Cabled with an Overall Aluminum/Polyester Shield and a Drain Wire
- Jacket: Flexible PVC

Specifications:

- UL Type CM
- C(UL) CMG
- AWM Style 2464 80°C 300 Volts
- Passes UL 1685 Flame Test
- RoHS Compliant

Overall Shielded and Individually Shielded Multipair/Multiconductor Cable

OVERALL SHIELD				
Part No.	No. of Cond.	Jacket Thickness (inches)	Nominal Diameter (inches)	Jacket Color
24 AWG 7-Strand Tinned Copper				
35244	4	.032	.173	Chrome Gray
35252	8	.032	.213	Chrome Gray
35254	9	.032	.226	Chrome Gray
18 AWG 16-Strand Tinned Copper				
37210	4	.032	.231	Chrome Gray
INDIVIDUALLY SHIELDED				
Part No.	No. of Pairs	Jacket Thickness (inches)	Nominal Diameter (inches)	Jacket Color
20 AWG 7-Strand Tinned Copper				
*37312	2	.035	.215	Chrome Gray



FLEXIBLE PVC JACKET
 UL TYPE CM
 C(UL) CMG
 AWM 2598 60°C 300 VOLT

Characteristics

Operating Temperature:

- 30°C to +60°C

Voltage Rating:

- 300 Volts

Color Description:

- Chart A, Page 37

Product Description:

- Stranded Tinned Copper

- Insulation: PVC
- Jacket: Flexible PVC

Specifications:

- UL Type CM
- C(UL) CMG
- AWM Style 2598 60°C 300 Volts
- Passes UL 1685 Flame Test
- RoHS Compliant

Multiconductor Cable

Part No.	No. of Cond.	Jacket Thickness (inches)	Nominal Diameter (inches)	Jacket Color
18 AWG 16-Strand Tinned Copper				
37101	3	.032	.241	Chrome Gray
37103	4	.032	.262	Chrome Gray

Shielded Specialty Electronic Cables



Characteristics

Voltage Rating:

- **37710** - AWM 2576: 150 Volts
- 300 Volts for Remaining PNs

Product Description:

- Stranded Tinned Copper
- Insulation: PVC
- Conductors Cabled with an Overall Aluminum/Polyester Shield and a Drain Wire
- Jacket: Flexible PVC

Specifications:

- UL Type CM
- C(UL) CMG
- **37702/37703** - AWM Style 2598 60°C 300 Volts
- **37710** - AWM Style 2576 60°C 150 Volts
- **36204/36230/37212/37208** - AWM Style 2092 and 2093 60°C 300 Volts
- **36202** - C(UL)CMH
- Passes UL 1685 Flame Test
- RoHS Compliant

Shielded Multiconductor Cable, Flexible PVC Jacket

UL TYPE CM • C(UL) CMG 300 VOLT • AWM 2598 60°C 300 VOLT

Part No.	No. of Cond.	Jacket Thickness (inches)	Nominal Diameter (inches)	Jacket Color
18 AWG 16-Strand Tinned Copper				
37702	10	.032	.395	Chrome Gray
37703	12	.032	.414	Chrome Gray

UL TYPE CM • C(UL) CMG 300 VOLT • AWM 2576 80°C 150 VOLT

22 AWG 7-Strand Tinned Copper				
37710	4	.032	.188	Chrome Gray

UL TYPE CM • C(UL) CMH • AWM 2092 AND 2093 60°C 300 VOLT

Part No.	No. of Cond.	Jacket Thickness (inches)	Nominal Diameter (inches)	AWM Style	Jacket Color
22 AWG 7-Strand Tinned Copper					
36204	2	.025	.175	2092	Chrome Gray
36230	3	.032	.199	2093	Chrome Gray
20 AWG 7-Strand Tinned Copper					
37212	2	.030	.203	2092	Chrome Gray
18 AWG 16-Strand Tinned Copper					
37208	3	.030	.248	2093	Chrome Gray

Shielded Multiconductor Cable PVC Jacket

UL TYPE CM • C(UL) CMH • 300 VOLT

OVERALL SHIELD				
Part No.	No. of Cond.	Jacket Thickness (inches)	Nominal Diameter (inches)	Jacket Color
22 AWG 7-Strand Tinned Copper Shielded				
36202	2	.021	.137	Chrome Gray



Bag Wire

RISER FR PVC JACKET
 UL TYPE CL3R/FPLR/CMR
 C(UL)US CMR 300 VOLT



Applications

- Intercom/PA Systems
- Sound/Audio Systems

Characteristics

Operating Temperature:

- -10°C to +75°C

Voltage Rating:

- 300 Volts

Color Description:

- Color Code: Black, Red, Yellow and Light Blue
- Jacket Color: Specified in Table

Product Description:

- Stranded or Solid Bare Copper
- Insulation: Polyethylene
- Jacket: Flame-Retardant PVC

Specifications:

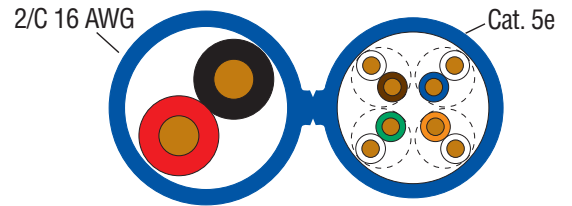
- UL Type CL3R/FPLR
- C(UL)US CMR
- Passes UL 1666 Flame Test

Riser Sound and Security Cable Bag Wire

Part No.	No. of Cond.	Jacket Thickness (inches)	Jacket Color	Nominal Diameter (inches)
22 AWG 7-Strand Bare Copper 4-Cable Composite				
35310	2	.016	White	.115
35411	2	.016	Yellow	.115
35412	2	.016	Orange	.115
35413	2	.016	Green	.115
35414	2	.016	Blue	.115
35415	2	.016	Brown	.115
35416	2	.016	Gray	.115
35308	4	.016	White	.132
35418	4	.016	Yellow	.132
35419	4	.016	Orange	.132
35420	4	.016	Green	.132
22 AWG Solid Bare Copper 4-Cable Composite				
35309	2	.016	White	.106
35307	4	.016	White	.121
35383	4	.016	Brown	.121
35405	4	.016	Yellow	.121
35406	4	.016	Orange	.121
35407	4	.016	Green	.121
35408	4	.016	Blue	.121
35409	4	.016	Gray	.121
35410	4	.016	Beige	.121
35423	4	.016	Red	.121

RISER: UL TYPE CMR
PLENUM: UL TYPE CMP
 300 VOLT

Category 5e + 2/C Siamese Specialty Cables



5e Component

- Conductor: 24 AWG Solid Bare Copper
- Plenum Insulation: Fluoropolymer
- Riser Insulation: Polyolefin
- Color Code Per TIA-568-C.2

2 Conductor

- Conductor: 16 AWG 19-Strand Bare Copper
- Riser Insulation: Low-Smoke PVC
- Plenum Insulation: Flame-Retardant PVC
- Color Code: Black, Red

Jacket

- Plenum: Flame-Retardant PVC
- Riser: Low-Smoke, Flame-Retardant PVC

Applications

- Gigabit Ethernet (1000Base-T)
- Multimedia and ISDN
- High-Speed Voice/Data Applications
- 1.2 Gbps Ethernet
- Broadband Video
- Desktop Publishing

Compliances

- ETL Verified ANSI/TIA-568-C.2
- UL Listed Type CMR
- UL Listed Type CMP
- ICEA S-90-661
- NEC Article 800
- California State Fire Marshal
- RoHS Compliant

Part Numbers			Available Put-Ups		
Jacket Color	Riser	Plenum	1,000' Box	1,000' Reel	Bulk Reels
BLUE	35965	35964		X	X

Physical Data	Riser	Plenum
Nominal Cable Diameter (inches)	.180 x .380	.180 x .370
Nominal Cable Weight (lbs./1,000 ft.)	41.0	43.0
Temperature Rating (Celsius)		
Installation:	0 to +60	0 to +60
Operation:	-20 to +75	-20 to +75

Transmission Throughput

	Char. Impedance	Return Loss	Attenuation	NEXT	PSNEXT	ACRF	PSACRF
Freq.	(Ohms)	(dB)	(dB/100m)	(dB/100m)	(dB/100m)	(dB/100m)	(dB/100m)
(MHz)	(+/-15)	(Min.)	(Max.)	(Min.)	(Min.)	(Min.)	(Min.)
1	100	20	2	65.3	62.3	63.8	60.8
4	100	23	4.1	56.3	53.3	51.7	48.7
8	100	24.5	5.8	51.8	48.8	45.7	42.7
10	100	25	6.5	50.3	47.3	43.8	40.8
16	100	25	8.2	47.3	44.3	39.7	36.7
20	100	25	9.3	45.8	42.8	37.7	34.7
25	100	24.3	10.4	44.3	41.3	35.8	32.8
31.25	100	23.6	11.7	42.9	39.9	33.9	30.9
62.5	100	21.5	17	38.4	35.4	27.8	24.8
100	100	20.1	22	35.3	32.3	23.8	20.8

Electrical Characteristics

DC Resistance (max.): 9.38
 DC Resistance Unbalance (max.) Individual Pair %: 5.0

Nominal Velocity of Propagation % Speed of Light:
 Plenum: 72 Riser: 70

Characteristic Impedance (Ohms): 100 +/- 15
 Propagation Delay Skew (max.) (ns/100m): 45



Color Code



25-PAIR



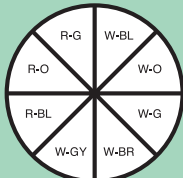
32-PAIR



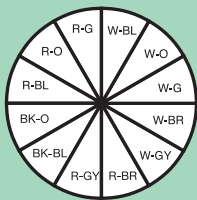
50-PAIR



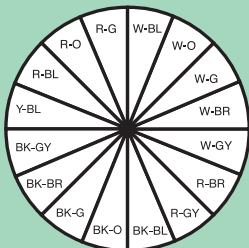
100-PAIR



200-PAIR



300-PAIR



400-PAIR

Inside Telephone Wire and Switchboard Cable – Band Marked – Plenum and Riser

Pair No.	Tip	Ring	Pair	Tip	Ring
1	White/Blue	Blue/White	14	Black/Brown	Brown/Black
2	White/Orange	Orange/White	15	Black/Slate	Slate/Black
3	White/Green	Green/White	16	Yellow/Blue	Blue/Yellow
4	White/Brown	Brown/White	17	Yellow/Orange	Orange/Yellow
5	White/Slate	Slate/White	18	Yellow/Green	Green/Yellow
6	Red/Blue	Blue/Red	19	Yellow/Brown	Brown/Yellow
7	Red/Orange	Orange/Red	20	Yellow/Slate	Slate/Yellow
8	Red/Green	Green/Red	21	Violet/Blue	Blue/Violet
9	Red/Brown	Brown/Red	22	Violet/Orange	Orange/Violet
10	Red/Slate	Slate/Red	23	Violet/Green	Green/Violet
11	Black/Blue	Blue/Black	24	Violet/Brown	Brown/Violet
12	Black/Orange	Orange/Black	25	Violet/Slate	Slate/Violet
13	Black/Green	Green/Black			

Telephone cables manufactured with more than 25 pairs are manufactured in groups with different binder colors around each group, as described below.

BINDER COLOR CODE	
W-BL	White/Blue
W-O	White/Orange
W-G	White/Green
W-BR	White/Brown
W-GR	White/Gray
R-BL	Red/Blue
R-O	Red/Orange
R-G	Red/Green
R-BR	Red/Brown
R-GY	Red/Gray
BK-BL	Black/Blue
BK-O	Black/Orange
BK-G	Black/Green
BK-BR	Black/Brown
BK-GY	Black/Gray
Y-BL	Yellow/Black

Color Code Charts Electronic Cables

Chart A

Conductor	Color	Conductor	Color
1st	Black	7th	Orange
2nd	White	8th	Yellow
3rd	Red	9th	Violet
4th	Green	10th	Gray
5th	Brown	11th	Pink
6th	Blue	12th	Tan

Chart B

Conductor	Color	Conductor	Color	Conductor	Color
1st	Black	18th	Orange/Red	35th	Wht/Red/Org
2nd	White	19th	Blue/Red	36th	Org/Wht/Blue
3rd	Red	20th	Red/Green	37th	Wht/Red/Blue
4th	Green	21st	Orange/Green	38th	Blk/Wht/Grn
5th	Orange	22nd	Blk/Wht/Red	39th	Wht/Blk/Grn
6th	Blue	23rd	Wht/Blk/Red	40th	Red/Wht/Grn
7th	White/Black	24th	Red/Blk/Wht	41st	Grn/Wht/Blue
8th	Red/Black	25th	Grn/Blk/Wht	42nd	Org/Red/Grn
9th	Green/Black	26th	Org/Blk/Wht	43rd	Blue/Red/Grn
10th	Orange/Black	27th	Blue/Blk/Wht	44th	Blk/Wht/Blue
11th	Blue/Black	28th	Blk/Red/Grn	45th	Wht/Blk/Blue
12th	Black/White	29th	Wht/Red/Grn	46th	Red/Wht/Blue
13th	Red/White	30th	Red/Blk/Grn	47th	Grn/Org/Red
14th	Green/White	31st	Grn/Blk/Org	48th	Org/Red/Blue
15th	Blue/White	32nd	Org/Blk/Grn	49th	Blue/Red/Org
16th	Black/Red	33rd	Blue/Wht/Org	50th	Blk/Org/Red
17th	White/Red	34th	Blk/Wht/Org		

Chart C

Pair No.	Color Combination	Pair No.	Color Combination	Pair No.	Color Combination
1	Black/Red	14	Green/White	27	Brown/Orange
2	Black/White	15	Green/Blue	28	Orange/Yellow
3	Black/Green	16	Green/Yellow	29	Violet/Orange
4	Black/Blue	17	Green/Brown	30	Violet/Red
5	Black/Yellow	18	Green/Orange	31	Violet/White
6	Black/Brown	19	White/Blue	32	Violet/Dark Green
7	Black/Orange	20	White/Yellow	33	Violet/Light Blue
8	Red/White	21	White/Brown	34	Violet/Yellow
9	Red/Green	22	White/Orange	35	Violet/Brown
10	Red/Blue	23	Blue/Yellow	36	Violet/Black
11	Red/Yellow	24	Blue/Brown	37	Gray/White
12	Red/Brown	25	Blue/Orange		
13	Red/Orange	26	Brown/Yellow		

Chart D

COLOR CODE			
PR1-Black	Black/White	PR7-Orange	White/Orange
PR2-White	White/Black	PR8-Yellow	White/Yellow
PR3-Red	White/Red	PR9-Violet	White/Violet
PR4-Green	White/Green	PR10-Gray	White/Gray
PR5-Brown	White/Brown	PR11-Pink	White/Pink
PR6-Blue	White/Blue	PR12-Tan	White/Tan
1/Cond – Green/Yellow			

Chart F

FPL, FPLR, FPLP	
1-Black	7-Green
2-Red	8-White
3-Yellow	9-Violet
4-Blue	10-Gray
5-Brown	11-Pink
6-Orange	12-Tan

Chart E

Base No.	1st Color	2nd Stripe	Stripe
1	Black	—	—
2	Red	—	—
3	White	—	—
4	Green	—	—
5	Orange	—	—
6	Blue	—	—
7	Brown	—	—
8	Yellow	—	—
9	Violet	—	—
10	Gray	—	—
11	Pink	—	—
12	Tan	—	—
13	Red	Green	—
14	Red	Yellow	—
15	Red	Black	—
16	White	Black	—
17	White	Red	—
18	White	Green	—
19	White	Yellow	—
20	White	Blue	—
21	White	Brown	—
22	White	Orange	—
23	White	Gray	—
24	White	Violet	—
25	White	Black	Red
26	White	Black	Green
27	White	Black	Yellow
28	White	Black	Blue
29	White	Black	Brown
30	White	Black	Orange
31	White	Black	Gray
32	White	Black	Violet
33	White	Black	Black
34	White	Red	Black
35	White	Red	Red
36	White	Red	Green
37	White	Red	Blue
38	White	Red	Brown
39	White	Red	Violet
40	White	Green	Black
41	White	Green	Red
42	White	Green	Green
43	White	Green	Blue
44	White	Green	Brown
45	White	Green	Violet
46	White	Blue	Black
47	White	Blue	Red
48	White	Blue	Green
49	White	Blue	Blue
50	White	Blue	Brown
51	White	Blue	Violet
52	White	Brown	Black
53	White	Brown	Red
54	White	Brown	Green
55	White	Brown	Blue
56	White	Brown	Brown
57	White	Brown	Violet
58	White	Violet	Red
59	White	Violet	Green
60	White	Violet	Blue

Comtran Catalog Index

Part Number	Page Number	Part Number	Part Number	Part Number	Part Number	Part Number	Part Number
32026	21	32546	22	32809	29	33612	23
32035	20	32548	22	32820	8	33617	22
32060	27	32567	8	32836	28	33658	22
32065	31	32573	20	32837	28	33735	22
32070	9	32579	6	32838	29	33779	22
32113	18	32580	6	32840	28	33789	21
32114	18	32628	18	32854	9	33817	22
32115	18	32630	18	32863	9	34061	19
32172	27	32631	18	32870	18	34228	23
32174	27	32632	18	32871	18	34236	22
32178	26	32633	18	32881	8	34237	23
32180	26	32644	8	32882	8	34242	23
32208	26	32648	9	32883	8	34269	30
32209	26	32670	18	32906	9	34277	3
32210	26	32675	18	32991	21	34304	22
32214	27	32676	18	33288	20	34481	3
32222	18	32708	27	33289	20	34757	18
32282	26	32729	26	33290	20	34758	18
32284	26	32763	20	33291	20	34765	18
32347	8	32772	28	33292	20	34829	26
32520	20	32774	28	33293	20	34830	26
32521	20	32776	28	33548	19	34833	26
32522	20	32778	28	33551	22	34842	26
32523	20	32783	29	33555	19	34843	26
32524	20	32785	29	33559	19	34844	26
32525	20	32787	29	33560	19	34846	26
32528	20	32789	29	33561	19	34848	26
32529	20	32794	28	33570	19	34850	26
32532	20	32795	28	33572	19	34853	27
32533	22	32796	28	33574	19	34854	27
32537	22	32798	28	33579	19	34855	27
32538	22	32800	28	33580	19	34857	27
32539	8	32805	29	33589	19	34859	27
32542	22	32806	29	33610	23	34861	27
32543	22	32807	29	33611	23	34869	27

Comtran Catalog Index

Part Number	Page Number	Part Number	Part Number	Part Number	Part Number	Part Number	Part Number
34871	27	35383	34	35911	5	37103	32
34873	27	35405	34	35928	4	37208	33
34875	27	35406	34	35930	4	37210	32
34883	20	35407	34	35931	4	37212	33
34888	21	35408	34	35939	4	37301	31
34893	20	35409	34	35940	4	37302	31
34909	21	35410	34	35941	4	37312	32
34914	21	35411	34	35942	4	37702	33
34932	3	35412	34	35946	4	37703	33
34950	26	35413	34	35950	13	37710	33
34952	26	35414	34	35951	13	38600	3
34954	26	35415	34	35952	14	38601	3
34956	26	35416	34	35953	14	38622	23
34971	2	35418	34	35954	16	38653	8
34972	2	35419	34	35955	16	38654	8
34973	2	35420	34	35957	15	38667	21
34974	2	35423	34	35958	15	38673	21
34975	2	35479	7	35959	15	38676	9
34977	20	35480	7	35960	15	38677	3
35170	30	35481	7	35961	15	38678	3
35184	3	35712	31	35962	15	38696	22
35195	2	35775	24	35963	15	38697	22
35196	2	35777	24	35964	35	38698	22
35197	2	35779	24	35965	35	38699	22
35198	2	35781	24	35968	18	38700	22
35199	2	35783	25	35969	19	38704	20
35244	32	35785	25	35973	9	38705	20
35252	32	35787	25	35974	16	38706	20
35254	32	35789	25	35975	16	38708	20
35301	7	35794	10	35976	16	38709	20
35302	7	35800	6	35977	15	38710	20
35303	7	35802	6	35978	15	38748	26
35307	34	35882	3	36202	33	38749	27
35308	34	35897	3	36204	33	38752	26
35309	34	35903	9	36230	33	38860	22
35310	34	35905	9	37101	32		

NEC Substitution Chart

Communications wire and cable for premise installations are in accordance with Article 800 and other applicable parts of the National Electrical Code (NEC), latest issue. Communications wire and cables for Canada are in accordance with the harmonized Canadian Standard Association C22.2 No. 214, Underwriters Laboratories UL 444, latest issue.

Designations

CM

Communication Wires and Cables

CL2 and CL3

Class 2 and Class 3 Remote-Control, Signaling and Power-Limited Cables

FPL

Power-Limited Fire Alarm Cables

PLTC

Power-Limited Cables

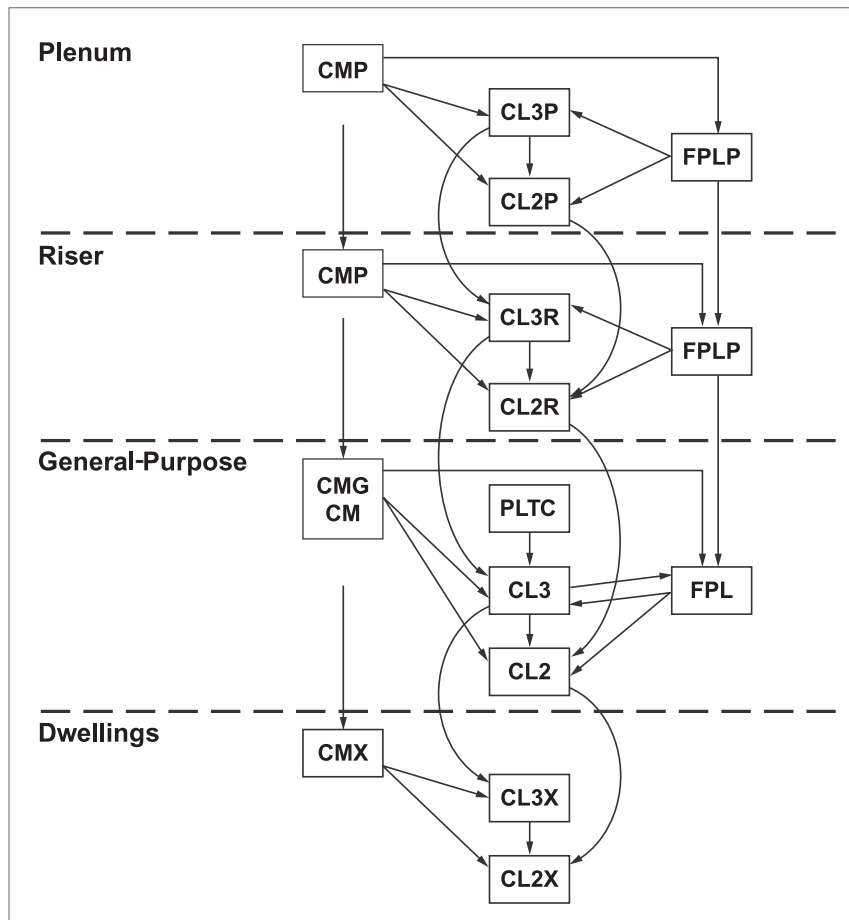


Cable A shall be permitted to be used in place of Cable B

Fire Resistance Level	Test Requirement	NEC Article		
		725	760	800
1 (Highest) Plenum Cables	CSA-FT6 (Steiner Tunnel) NFPA 262 (Steiner Tunnel)	CL2P CL3P	FPLP	CMP
Riser Cables – Multiple Floors	CSA-FT4 (Vertical Tray) UL-1666 (Vertical Shaft)	CL2R CL3R	FPLR	CMR
General-Purpose Cables	CSA-FT4 (Vertical Tray) UL-1581 (Vertical Tray)	CL2 CL3	FPL	CMG
(Lowest) Residential Cables – Restricted Use	CSA-FT UL-1581 VW-1	CL2X CL3X	–	CMX

Notes:

1. Cables with a higher fire resistance level may be substituted for those with a lower fire resistance level.
2. Non-fire-rated outside plant telephone cables may not run outside of a rigid metal conduit more than 50 feet from the point of entrance into a building.
3. Cables rated CMG or CM may be used in runs penetrating one floor (NEC 800-53).



Comtran is proud to be an ISO 9001 Certified Company. In order to meet the requirements of ISO 9001:2008, and to ensure quality, we established, implemented and documented a comprehensive quality management system. We are committed to continually improving our quality performance using this system.

Quality Policy

Comtran Corporation, a leading manufacturer of insulated wire and cable, is committed to providing the highest quality of products and services which meet or exceed our customers' expectations. By investing in the training and education of our employees, we will achieve continuous improvement of all areas of our business. By monitoring and measuring ourselves against defined goals, we will continually improve our performance. The quality management system is fully supported by top management and defines the entire organization's commitment to customer satisfaction.



NSAI

Certificate of Registration of Quality Management System to I.S. EN ISO 9001:2008

The National Standards Authority of Ireland certifies that:

Comtran Cable, LLC
330A Turner Street
South Attleboro, MA 02703
USA

has been assessed and deemed to comply with the requirements of the above standard in respect of the scope of operations given below:

**Manufacturer of Wire and Cable for Electrical,
Electronic, and Voice and Data Communications
Applications**

Approved by:
Kevin D. Mullaney
Chief Executive Officer

Approved by:
Alfred Au
Operations Manager

Registration Number: 19.4288
Certification Granted: Apr 2, 2007
Effective Date: Oct 12, 2010



National Standards Authority of Ireland, 402 Amherst Street, Nashua, New Hampshire, NH 03063, USA T +1 603 882 4412



COMTRAN CABLE
ENGINEERED QUALITY

www.comtrancorp.com



A Marmon Wire & Cable/Berkshire Hathaway Company